

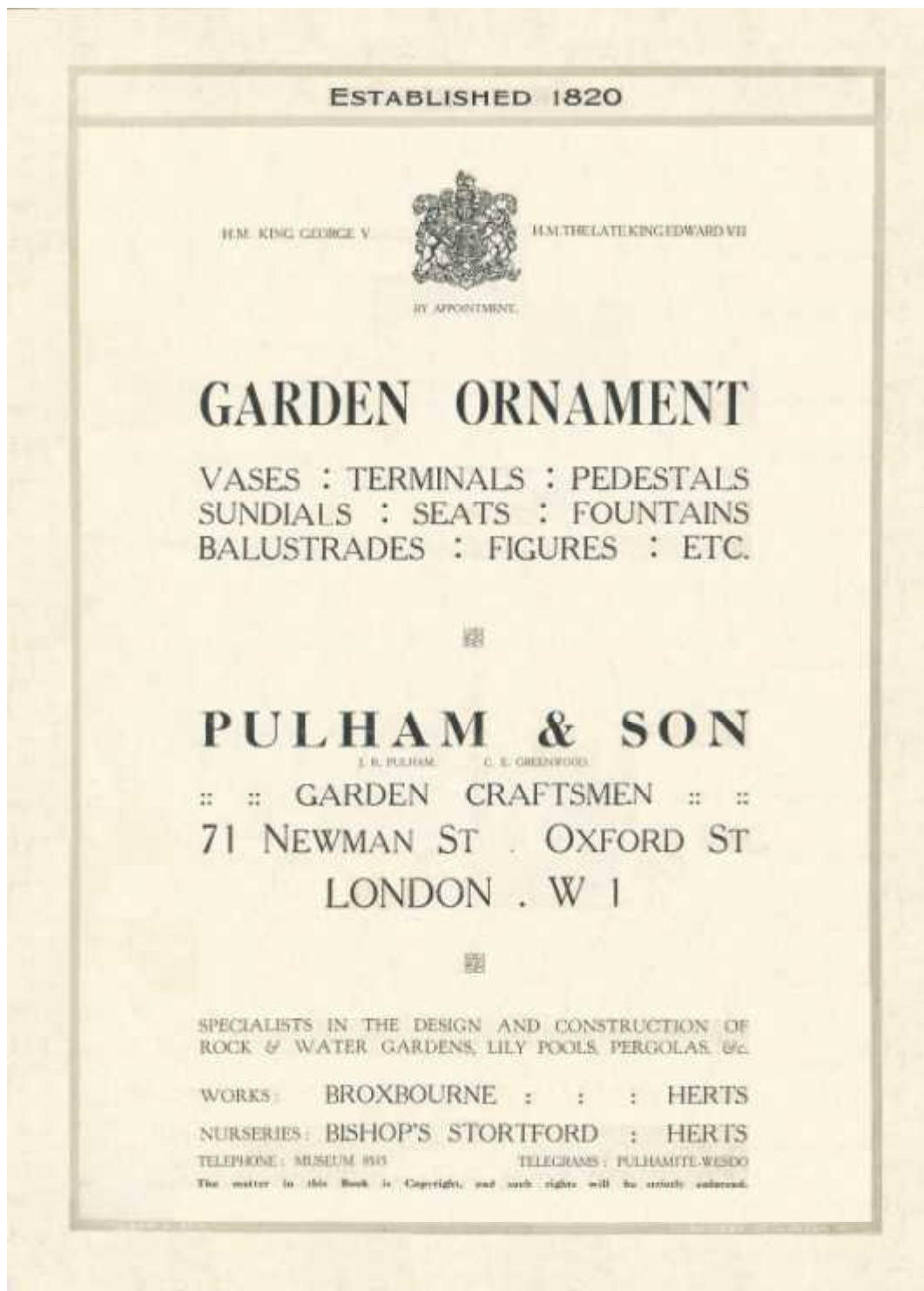
Archive 2 - The *Garden Ornament* Catalogue - c1925



Pulham's *Garden Ornament Catalogue* - c1925

There were actually two editions of Pulhams' *Garden Ornament Catalogue* published – one dated c1925, and the other c1934 – but the contents are extremely similar. This Archive is a scan of the c1925 Edition, but, as most of the products listed and illustrated in the later edition are included here, there is no point in duplicating them simply in order to show the few additional items.

Thanks to one of those incredible coincidences that have played such a fascinating part in my research of this firm, I have been fortunate in obtaining an almost pristine copy of this publication. David Pilkington found it in a box in his attic one day, and decided to check the internet to see if he could find out something about the firm. He found my website, and kindly invited me to add it to my archives. My response was speedy and emphatic.



PAGE 2		CONTENTS AND INDEX	
VASES AND PEDESTALS	PAGES 5-18	BALUSTRADES	PAGES 57-64
TUBS AND POTS	19-24	FIGURES	65-68
TERMINALS	25-30	BIRD BATHS	69-72
SUNDIALS	31-40	JAPANESE LANTERNS	73
SEATS	41-44	EXAMPLES OF WORK	74-75
FOUNTAINS	45-56	TESTIMONY	76

Index to Pedestals, shown with Vases, Etc.

Pedestal No.	Page.	Shown with Vase.	Pedestal No.	Page.	Shown with Vase.
251	5	Hertford	263	10	Ryston
252	5	Inverness	264	8	Preston
253	5	Manchester	265	7	York
253	6	Grecian	266	18	Sandy
253	11	Frant	267	10	Brighton
253	18	Presdale	268	8	Measures
254	5	Otford	269	9	Lymington
254A	11	Westcott	269	12	Newman
255	6	Southend	269	13	Adam
256	6	Temple Gardens	269	16	Westonbirt
256	10	Forty Thieves	269A	12	Belmont
257	8	Bagshot	270	12	Langley
257	8	Newport	271	11	Richmond
257	9	Ewell	272	26	Kingswood
257	9	Mortimer	272	27	Belper Urn
258	7	Moreton	273	13	Welwyn
258	10	Rothschild	274	14	Grape Vine
258	17	Carlton	274	25	Lindley
259	7	Rosemount	275	21	Wandle
259	16	Banavie	276	15	Upcher
259	17	Tunbridge Wells	277	21	Scarboro'
260	6	Arundel	278	14	Maple
260	18	Canford	278A	14	Maple
261	7	Carrington	279	26	Aldbrough
261	11	Nottingham	280	17	Paris
262	9	Wreath	282	16	Stacey

MATERIAL AND TERMS

PAGE 3

MATERIAL

THE productions herein illustrated are made of "Pulhamite" stone, which is considered the best material for all designed stonework in connection with the garden for the following reasons :—

Pulhamite Stone is more durable than natural stone. Cement is NOT used in its composition. It is, moreover, much lighter in substance, making more elegant productions than any other so-called artificial stone. This is an important point, as the sides of a Pulhamite vase give more space for soil. It is the colour of light stone, and if desired can be made antique colour.

There is nothing deleterious to plant life in it, in fact, owing to the nature of the material, the opposite may be said in its favour.

As to its durability, we can refer to work which has been exposed for over 70 years. As an example we may instance the vases at Sandringham House, which were placed on the Terrace by the order of His Late Majesty King Edward VII.

TERMS

PRICES. The prices quoted in this list are nett. Invoices are forwarded when goods are despatched.

CARRIAGE. All goods are sent "Carriage forward."

PACKING. Goods are carefully packed in cases, which are charged to the purchaser, such charges being credited in full when the cases are returned to the Works, with the straw or other packing, in good condition.

BREAKAGES. Goods are consigned at "Company's risk." Therefore, in case of damage sustained in rail transit, the Railway Company are responsible. They should be advised of such damage on the day that the goods are received, because, if not advised within three days, they will not accept liability. It is necessary that the Railway Company's delivery sheet should be signed "Not examined," otherwise they will not be held responsible for damage caused during transit.

EXPORT. Goods for export are packed in extra strong cases, not returnable, for which a charge is made upon the value of the order of 15%, which includes placing F.O.B. London Docks.

ORDERING. When ordering goods, please quote both the number and description of the article, to avoid mistakes.

DIMENSIONS. In most cases, the dimensions shown are taken to the extreme, i.e., across the handles of vases, etc., and are approximate.

CORRESPONDENCE. All communications should be addressed to our Showrooms, 71, Newman Street, Oxford Street, W 1, and not to the Works.

PAGE 4



VASES : TAZZAE
TERMINALS . .
PEDESTALS . .
TUBS : POTS .
JARDINIÈRE, Etc.

IN the following pages a variety of designs are illustrated,
 most of which can be supplied from stock.



THE vases, etc., need not be placed upon the pedestals,
 shown in the photographs, as many fit other pedestals
 than the one we have placed them on for the purposes
 of illustration, therefore the subjects can be interchanged.



IN selecting Vases, Tubs or Terminals, care should be
 taken that the design harmonises with the surroundings,
 especially in its architectural features.



THE dimensions given are, in most cases, taken to the
 extreme, i.e., across handles, etc.



ALL Vases, Tubs, etc., are made with a drainage hole
 in the bottom.



SECTION I

VASES, TAZZAE AND PEDESTALS

PAGE 5



No. 1

No. 1
HERTFORD VASE
Height 1ft. 1in.
Diameter 1ft. 3ins.
Plinth square 7ins.
Price £1 8 6
Without handles
Price £1 4 6

PEDESTAL No. 251
Height 1ft.
Base square 9ins.
Price £1 0 0



No. 2

No. 2
INVERNESS VASE
Height 1ft. 4ins.
Diameter 1ft. 1in.
Plinth square 7ins.
Price £1 10 6
Without handles
Price £1 6 6

PEDESTAL No. 252
Height 1ft. 4ins.
Base square 10½ins.
Price £1 10 0



No. 3

No. 3
MANCHESTER TAZZA
Height 1ft. 1½ins.
Diameter 1ft. 6ins.
Plinth square 7½ins.
Price £1 16 0

No. 3a Same Tazza with
egg and tongue ornament
round rim.
Price £2 2 0

PEDESTAL No. 253
Height 1ft. 4ins.
Base square 1ft. 2½ins.
Price £2 2 0



No. 4

No. 4.
OTFORD VASE
Height 1ft. 5ins.
Diameter 1ft. 9ins.
Plinth square 9ins.
Price £3 7 0
No. 4a 1.5½ × 1.10 × 9½
Price £3 12 0
No. 4b 1.7 × 1.11 × 10½
Price £3 17 6
Price without handles
5/- each less.

PEDESTAL No. 254
Height 1ft. 1½ins.
Base square 1ft. 4ins.
Price £2 7 6

No. 254a
Height 1ft. 5ins.
Price £2 15 0

No. 254b
Height 1ft. 7½ins.
Price £3 0 0

PAGE 6
VASES, TAZZAE AND PEDESTALS
SECTION I



No. 5

No. 5
SOUTHEND TAZZA
Height 1ft. 3½ins.
Diameter 1ft. 8½ins.
Plinth square 10½ins.
Price £2 10 0

PEDESTAL No. 255
Height 1ft. 6½ins.
Base square 1ft. 1½ins.
Price £2 9 0



No. 6

No. 6
GRECIAN VASE
Height 1ft. 11½ins.
Diameter 1ft. 5½ins.
Plinth square 10ins.
Price £4 5 0
Without handles
Price £4 0 0

PEDESTAL No. 253
Height 1ft. 4ins.
Base square 1ft. 2½ins.
Price £2 2 0



No. 7

No. 7
TEMPLE GARDENS TAZZA
Height 1ft. 9ins.
Diameter 2ft. 2ins.
Plinth square 11ins.
Price £6 5 0
Without handles
Price £6 0 0

PEDESTAL No. 256
Height 1ft. 9ins.
Base square 1ft. 3ins.
Price £3 7 6






No. 8

No. 8
ARUNDEL VASE
Height 1ft. 8ins.
Diameter 2ft. 1in.
Plinth square 1ft. 0½in.
Price £6 0 0
Without handles
Price £5 15 0

PEDESTAL No. 260
Height 2ft. 4ins.
Base square 1ft. 5ins.
Price £5 7 6

FULHAM & SON
11 NEWBURY ST. LONDON W.

SECTION I	VASES AND PEDESTALS	PAGE 7
	<p>No. 9 YORK VASE Height 1ft. 8ins. Diameter 1ft. 7ins. Plinth square 10½ins. Price £5 0 0</p> <p>No. 9a, as illustrated 1.11 × 1.11 × 1.0½. Price £6 0 0</p> <p>No. 9b 2.0 × 2.2 × 1.2½. Price £7 0 0</p> <p>PEDESTAL No. 265 Height 2ft. 1½ins. Base square 1ft. 6ins. Price £7 5 0</p> <p>Note.—No. 9b requires a larger Pedestal, similar to No. 257 page 9, 264 page 8, 268 page 8.</p>	
No. 9	<p>No. 10 MORETON VASE Height 1ft. 9½ins. Diameter 1ft. 11½ins. Plinth square 1ft. 1in. Price £5 5 0</p> <p>PEDESTAL No. 258 Height 2ft. 1½ins. Base square 1ft. 5½ins. Price £4 6 6</p>	No. 10
	<p>No. 11 ROSEMOUNT VASE Height 1ft. 7½ins. Diameter 1ft. 8ins. Plinth square 11½ins. Price £4 7 6</p> <p>PEDESTAL No. 259 Height 2ft. 3ins. Base square 1ft. 6ins. Price £4 5 0</p>	
No. 11	<p>No. 12 CARRINGTON VASE Height 1ft. 8ins. Diameter 2ft. 1in. Plinth square 11ins. Price £5 15 0</p> <p>Without handles, Price £5 10 0</p> <p>PEDESTAL No. 261 Height 2ft. 1½ins. Base square 1ft. 6ins. Price £5 10 0</p>	No. 12
PULHAM & SONS	11, NEWMAN ST. LONDON W.	

PAGE 8
VASES AND PEDESTALS
SECTION I



No. 13

No. 13
PRESTON VASE
Height 1ft. 11ins.
Diameter 2ft. 1in.
Plinth square 1ft. 4ins.
Price £6 15 0
PEDESTAL No. 204
Height 1ft. 3ins.
Base square 1ft. 8ins.
Price £3 7 6



No. 15.

No. 15.
BAGSHOT VASE
Height 2ft. 7½ins.
Diameter 2ft. 1in.
Plinth square 1ft. 2½ins.
Price £7 5 0
Without handles
Price £6 18 0
PEDESTAL No. 257
Height 1ft. 10½ins.
Base square 1ft. 10½ins.
Price £5 5 0



No. 16

No. 16
MEASURES VASE
Height 2ft. 4ins.
Diameter 2ft. 0ins.
Plinth square 1ft. 4ins.
Price £6 18 0
PEDESTAL No. 208
Height 2ft. 4½ins.
Base square 2ft. 0ins.
Price £7 10 0



No. 17

No. 17
NEWPORT TAZZA
Height 2ft. 3½ins.
Diameter 2ft. 9ins.
Plinth square 1ft. 1½ins.
Price £9 0 0
Price without heads £8 0 0
PEDESTAL No. 257
Height 1ft. 10½ins.
Base square 1ft. 10½ins.
Price £5 5 0

PULHAM & SON
15, NEWMAN ST. LONDON W.

SECTION I

VASES, TAZZAE AND PEDESTALS

PAGE 9



No. 18

No. 18
EWELL VASE
Height 2ft. 3ins.
Diameter 2ft. 4ins.
Plinth square 1ft. 3ins.
Price £6 18 0
PEDESTAL No. 257
Height 1ft. 10ins.
Base square 1ft. 10ins.
Price £5 5 0



No. 19

No. 19
MORTIMER VASE
Height 2ft. 1in.
Diameter 2ft. 8ins.
Plinth square 1ft. 1in.
Price £7 15 0

No. 19A
2.4 x 2.9 x 1.3
Price £8 15 0

PEDESTAL No. 257
Height 1ft. 10ins.
Base square 1ft. 10ins.
Price £5 5 0



No. 20

No. 20
LYMINGTON TAZZA
Height 2ft. 1ins.
Diameter 2ft. 9ins.
Plinth square 1ft. 2ins.
Price £9 5 0

No. 20A
Without handles
Price £8 10 0

PEDESTAL No. 269
Height 1ft. 7ins.
Base square 1ft. 11ins.
Price £6 0 0



No. 21

No. 21
WREATH TAZZA
Height 2ft. 2ins.
Diameter 2ft. 4ins.
Plinth square 1ft. 4in.
Price £9 10 0
PEDESTAL No. 262
Height 1ft. 4in.
Base square 1ft. 3ins.
Price £1 12 6

PAGE 10
VASES, TAZZAE AND PEDESTALS
SECTION I



No. 22

No. 22
FORTY THIEVES VASE
Height 1ft. gins.
Diameter 1ft. 11ins.
Plinth square 1ft. oins.
Price £4 12 0

No. 22a 2.0 × 2.3 × 1.2½
Price £5 5 0
Without Handles
Price 5/- each less

PEDESTAL No. 256
Height 1ft. gins.
Base square 1ft. 3ins.
Price £3 7 6



No. 23

No. 23
RYSTON VASE
Height 1ft. 8ins.
Diameter 2ft. 3ins.
Plinth square 1ft. 1½ins.
Price £5 5 0

Without Handles
Price £5 0 0

PEDESTAL No. 263
Height 2ft. 2½ins.
Base across 1ft. 6ins.
Price £5 15 0



No. 24

No. 24
BRIGHTON VASE
Height 1ft. 2½ins.
Diameter 1ft. 4ins.
Price £6 5 0

PEDESTAL No. 267
Height 3ft. 5ins.
Price £6 18 0



No. 25

No. 25
ROTHSCHILD VASE
Height 1ft. gins.
Diameter 1ft. 9½ins.
Plinth square 1ft.
Price £4 12 6

No. 25a
1.10 × 1.11 × 1.1
Price £5 0 0

PEDESTAL No. 258
Height 2ft. 1½ins.
Base square 1ft. 5½ins.
Price £4 6 6

PULHAM & SON
71 NEWMAN ST LONDON W

SECTION 1 **VASES AND PEDESTALS** PAGE 11

No. 26

No. 26
NOTTINGHAM VASE
Height 1ft. 7½ins.
Diameter 1ft. 10½ins.
Plinth square 1ft. 0ins.
Price £5 5 0

PEDESTAL No. 261
Height 2ft. 1½ins.
Base square 1ft. 6ins.
Price £5 10 0

No. 27

No. 27
RICHMOND VASE
Height 1ft. 9ins.
Diameter 2ft. 1½ins.
Plinth square 11ins.
Price £4 2 6

PEDESTAL No. 271
Height 1ft. 10ins.
Base square 1ft. 9ins.
Price £4 15 0

No. 29

No. 29
FRANT VASE
Height 1ft. 7ins.
Diameter 1ft. 4ins.
Plinth square 7½ins.
Price £2 16 0
Without handles
Price £2 11 0

PEDESTAL No. 253
Height 1ft. 4½ins.
Base square 1ft. 2ins.
Price £2 2 0

No. 30.

No. 30
WESTCOTT VASE
Height 1ft. 4½ins.
Diameter 1ft. 7ins.
Plinth square 9ins.
Price £3 0 0

PEDESTAL No. 254a
Height 1ft. 5ins.
Base square 1ft. 4ins.
Price £2 15 0

ROBINS & CO. LTD. T. H. NEWMAN & CO. LTD. LONDON W.

PAGE 12
VASES AND PEDESTALS
SECTION I



No. 31

No. 31
LANGLEY VASE
 Height 1ft. 10ins.
 Diameter 2ft. 3½ins.
 Plinth square 1ft. 3ins.
 Price £6 0 0

PEDESTAL No. 270
 Height 1ft. 10½ins.
 Base square 1ft. 6ins.
 Price £4 0 0



No. 32

No. 33
NEWMAN VASE
 Height 2ft. 7ins.
 Diameter 2ft. 9½ins.
 Plinth square 1ft. 4½ins.
 Price £14 0 0
 Without heads
 Price £13 0 0

PEDESTAL No. 269
 Height 1ft. 7ins.
 Base square 1ft. 11½ins.
 Price £6 0 0



No. 33

PULHAM & SON
21, NEWMAN ST. LONDON W.

SECTION I

VASES AND PEDESTALS

PAGE 13



No. 35

No. 35
 ADAM VASE
 Height 3ft. 2in.
 Diameter 2ft. 9ins.
 Plinth square 1ft. 4ins.
 Price £14 10 0
 Without heads
 Price £13 10 0
 PEDESTAL No. 269
 Height 1ft. 7ins.
 Base square 1ft. 11½ins.
 Price £6 0 0



No. 36

No. 36
 WELWYN VASE
 Height 2ft. 9ins.
 Diameter 3ft.
 Plinth square 1ft. 3ins.
 Price £20 10 0
 PEDESTAL No. 273
 Height 2ft. 6ins.
 Base square 2ft. 5ins.
 Price £15 10 0

PAGE 14
VASES AND PEDESTALS
SECTION I



No. 37

No. 37
 MAPLE VASE
 Height 2ft. 3ins.
 Diameter 2ft. 3ins.
 Plinth square 1ft. 1in.
 Price £13 13 0

PEDESTAL No. 278
 Height 2ft. 8½ins.
 Base square 1ft. 8½ins.
 Price £10 10 0

No. 278A
 Without ornament
 Price £9 9 0



No. 38

No. 38
 GRAPE VINE VASE
 Height 2ft. 7ins.
 Diameter 2ft. 4ins.
 Plinth square 1ft. 2¼ins.
 Price £17 10 0

PEDESTAL No. 274
 Height 3ft. 2ins.
 Base square 2ft.
 Price £18 18 0

WILKINSON & SONS
15, NEWMAN ST. LONDON

SECTION I

VASES AND PEDESTALS

PAGE 15



No. 39

No. 39
UPCHER VASE
Height 2ft. 9ins.
Diameter 3ft. 9ins.
Price £20 10 0
PEDESTAL No. 276
Height, including top
plinth, 1.5½
Base across 3ft. 6ins.
Price £15 0 0



No. 40

No. 40
BYGRAVE VASE
Height 3ft. 2ins.
Diameter 2ft. 3ins.
Plinth diameter 1ft. 6ins.
Price £8 15 0

PAGE 16
VASES AND PEDESTALS
SECTION I



No. 41
WESTONBIRT VASE
Height 2ft. 6ins.
Diameter 2ft. 7½ins.
Plinth square 1ft. 6ins.
Price £14 14 0

PEDESTAL No. 269
Height 1ft. 7ins.
Base square 1ft. 11½ins.
Price £6 0 0

No. 41



No. 42
BANAVIE VASE
Height 1ft. 7ins.
Diameter 2ft. 1in.
Plinth square 11ins.
Price £7 5 0

PEDESTAL No. 259
Height 2ft. 3ins.
Base square 1ft. 6ins.
Price £4 5 0

No. 42



No. 43
STACEY TAZZA
Height 2ft. 3ins.
Diameter 3ft. 3ins.
Plinth square 1ft. 4ins.
Price £13 10 0

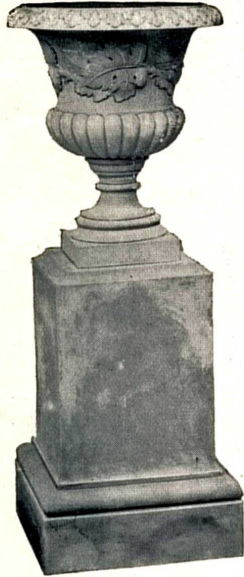
PEDESTAL No. 282
Height 1ft. 7ins.
Base square 2ft. 5ins.
Price £9 5 0

No. 43

PULHAM & SON
71, NEWMAN ST. LONDON W.

SECTION I VASES, TAZZAE AND PEDESTALS.

PAGE 17



No. 44

No. 44
TUNBRIDGE WELLS VASE
Height 2ft. 1in.
Diameter 1ft. 8ins.
Plinth square 9ins.
Price £4 10 0

PEDESTAL No. 259
Height 2ft. 3ins.
Base square 1ft. 6ins.
Price £4 5 0



No. 46

No. 46
PARIS VASE
Height 4ft.
Diameter 3ft.
Plinth square 1ft. 7ins.
Price £32 0 0

PEDESTAL No. 280
Height 3ft. 3ins.
Base square 2ft. 3ins.
Price £16 16 0




No. 47

No. 47
CARLTON VASE
Height 2ft. 3½ins.
Diameter 1ft. 8½ins.
Plinth square 1ft. 0½ins.
Price £4 15 0


PEDESTAL No. 258
Height 2ft. 1½ins.
Base square 1ft. 5½ins.
Price £4 6 6

PAGE 18
PEDESTALS AND VASES
SECTION I




No. 58.

No. 58
SANDY VASE
Height 2ft. 1in.
Diameter 1ft. 4½ins.
Plinth square 1ft.
Price £5 0 0
PEDESTAL No. 266
Height 1ft. 6ins.
Base square 2ft. 0in.
Price £4 0 0



No. 60

No. 60
PRESDALES VASE
Height 1ft. 8ins.
Diameter 1ft. 3ins.
Plinth square 9ins.
Price £3 10 0
Without handles £3 5 0
PEDESTAL No. 253
Height 1ft. 4ins.
Base square 1ft. 2½ins.
Price £2 2 0



No. 62

No. 62
CANFORD VASE
Height 2ft. 3½ins.
Diameter 1ft. 8½ins.
Plinth square 1ft. 0½in.
Price £7 0 0
PEDESTAL No. 260
Height 2ft. 4ins.
Base square 1ft. 5ins.
Price £5 7 6

PULHAM & SON
71, NEWMAN ST. LONDON W.

SECTION II

TUBS AND POTS

PAGE 19



No. 151

No. 151
CHARRINGTON BASKET
Height 1ft. 5ins.
Diameter 1ft. 6½ins.
Plinth across 11ins.
Price £4 0 0
„ without plinth £3 15 0



No. 153

HYDE PARK TUBS

	Height.	Diam.	Base.	£	s.	d.
No. 153a	10ins.	11ins.	9ins.	1	3	0
„ 153b	11½ins.	12ins.	10ins.	1	9	6
„ 153c	11ins.	14ins.	10ins.	1	12	0
„ 153d	11ins.	15ins.	12ins.	1	17	6
„ 153e	11½ins.	14ins.	10½ins.	1	17	6
„ 153f	11½ins.	16ins.	12½ins.	2	0	0
„ 153g	16ins.	18½ins.	13ins.	2	18	0
„ 153h	16½ins.	18½ins.	16ins.	3	12	0
„ 153j	19½ins.	22ins.	19ins.	5	5	0
„ 153k	20ins.	28ins.	25ins.	7	15	0



No. 152

No. 152
CHELSEA POT
Height 1ft. 4ins.
Diameter 1ft. 8ins.
Price £3 0 0



No. 154

No. 154
CIRENCESTER POT
Height 1ft. 2ins.
Diameter 1ft. 6½ins.
Base across 11ins.
Price £2 12 6
No. 154a
1.6½ × 2.0 × 1.2
Price £4 2 6

PAGE 20

TUBS AND POTS

SECTION II



No. 155

No. 155
PAGET POT
Height 1ft. 9 $\frac{1}{2}$ ins.
Diameter 2ft. 2ins.
Base across 1ft. 0ins.
Price £7 7 0



No. 156

No. 156
WARHAM POT
Height 1ft. 3ins.
Diameter 1ft. 5 $\frac{1}{2}$ ins.
Base across 1ft. 2 $\frac{1}{2}$ ins.
Price £3 12 6

No. 156a
1.7 $\frac{1}{2}$ × 2.1 × 1.8 $\frac{1}{2}$
Price £6 0 0



No. 157

No. 157
OXFORD POT
Height 1ft. 3ins.
Diameter 1ft. 6 $\frac{1}{2}$ ins.
Base across 11 $\frac{1}{2}$ ins.
Price £2 8 0



No. 158

No. 158
HUNTING POT
Height 1ft. 7 $\frac{1}{2}$ ins.
Diameter exclusive of heads
1ft. 3ins.
Base across 11ins.
Price £5 5 0

SECTION II

TUBS AND POTS

PAGE 21



No. 159

No. 159
 SCARBOROUGH TUB
 Height 1ft. 3½ ins.
 Diameter 2ft. 1in.
 Price £5 5 0
 PEDESTAL No. 277
 Height 1ft. 4½ ins.
 Base across 1ft. 7½ ins.
 Price £4 17 6

No. 160
 WANDLE BOX
 Height 1ft. 5 ins.
 Length 2ft. 5 ins.
 Width 1ft. 7 ins.
 Price £10 10 0
 PEDESTAL No. 275
 Height 1ft.
 Length 2ft. 6 ins.
 Width 1ft. 6 ins.
 Price £7 7 0



No. 160

FULHAM & SON

71, FLEETMAN ST. LONDON W.

PAGE 22

TUBS AND POTS

SECTION II



No. 161

No. 161
SILKSWORTH JARDINIÈRE
Height 2ft. 11ins.
Diameter 2ft. 5½ins.
Price £23 0 0

No. 163
LUTON TUB
Height 2ft. 7ins.
Diameter 3ft. 6ins.
Price £28 10 0



No. 163

PULHAM & SON

71 NEWMAN ST LONDON W

SECTION II

TUBS AND POTS

PAGE 23



No. 164

No. 164
 WORTHING JARDINIERE
 Height 1ft. 10½ ins.
 Diameter 3ft. 2 ins.
 Price, including plinth, £25 0 0



No. 166

No. 166
 EALING TUB
 Height 2ft. 6 ins.
 Diameter 2ft.
 Price £9 15 0



No. 165

No. 165
 STOREY POT
 Height 1ft. 1½ ins.
 Diameter 1ft.
 Plinth square 6 ins.
 Price £2 0 0

No. 167
 AMWELL WINDOW BOX
 Height 8 ins.
 Width 9 ins.
 Price 23/- per foot run.
 Height 8 ins.
 Width 12 ins.
 Price 27/- per foot run.
 Height 10 ins.
 Width 9 ins.
 Price 30/- per foot run.



No. 167

PULHAM & SON

71, NEWMAN ST. LONDON, W.

PAGE 24

TUBS AND POTS

SECTION II



No. 168

No. 168
AVIEMORE POT
Height 1ft. 3ins.
Diameter 1ft. 9ins.
Base 1ft. 2ins.
Price £2 16 0



No. 171

No. 171
MEUX POT
Height 1ft. 0½in.
Diameter 1ft. 1½ins.
Octagon plinth 9½ins.
Price £2 7 6



No. 175

No. 175
TWEEDALE POT
Height 1ft.
Diameter 1ft. 4ins.
Octagon plinth 1ft.
Price £1 12 0



No. 179

No. 179
BAXENDALE POT
Height 5½ins.
Diameter 11½ins.
Price £1 10 0



No. 180

No. 180
ADDISON POT
Height 7½ins.
Diameter 10½ins.
Price £1 0 0



No. 181

No. 181
GREENHILL POT
Height 8ins.
Diameter 11ins.
Price £1 2 6



No. 183

No. 183
FARNFIELD POT
Height 1ft. 1½ins.
Diameter 1ft. 3½ins.
Base 11½ins.
Price £3 3 0



No. 187

No. 187
IMPERIAL
INSTITUTE POT
Height 1ft. 0½in.
Diameter 1ft. 1½ins.
Octagon plinth 9½ins.
Price £2 2 0

No. 182 SINGAPORE
Similar design to No. 187
Height 9ins.
Diameter 9ins.
Octagon plinth 6ins.
Price £1 5 0

SECTION III

TERMINAL VASES

PAGE 25



No. 201

No. 201
 BARCLAY VASE
 Height 4ft. 3ins.
 Diameter 2ft. $\frac{1}{2}$ in.
 Plinth square 1ft.
 Price £28 0 0
 A series of 4 Vases
 with different panel
 subjects on each.



No. 202

No. 202
 LINDLEY VASE
 Height 4ft.
 Diameter 2ft. 8ins.
 Plinth 2ft. 1in.
 Price £38 0 0
 PEDESTAL No. 274
 Height 3ft. 2ins.
 Base across 2ft.
 Price £18 18 0



No. 203

No. 203
ALDBOROUGH VASE
Height 3ft. 4ins.
Diameter 1ft. 11ins.
Plinth square 1ft. 0½in.
Price £18 0 0
PEDESTAL No. 279
Height 3ft. 1½ins.
Base across 2ft.
Price £15 0 0



No. 204

No. 204
KINGSWOOD TERMINAL
Height 2ft. 3ins.
Diameter 1ft. 6ins.
Plinth across 10ins.
Price £8 15 0
PEDESTAL No. 272
Height 5ft. 3ins.
Price £7 15 0

SECTION III

TERMINALS

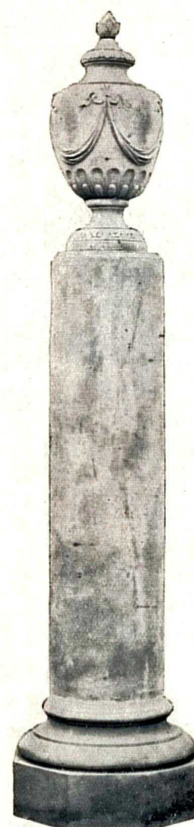
PAGE 27



No. 205

No. 205
COVENT GARDEN TERMINAL
Height 4ft. 2ins.
Diameter 2ft. 1in.
Plinth square 1ft. 0½in
Price £24 0 0

No. 208
BELPER URN TERMINAL
Height 2ft. 2ins.
Diameter 1ft.
Plinth across 9ins.
Price £3 10 0
PEDESTAL No. 272
Height 5ft. 3ins.
Price £7 15 0



No. 208



No. 206

No. 206
LINDEN GROVE TERMINAL
Height 3ft. 6ins.
Diameter 3ft.
Plinth square 1ft. 3ins.
Price £29 10 0

SULHAM & SON

71, NEWMAN ST LONDON W

PAGE 28

TERMINALS

SECTION III



No. 209

No. 209
GUILDFORD BALL TERMINAL
Height 11½ ins.
Diameter 8 ins.
Plinth square 8 ins.
Price £1 2 6

No. 210
WHEATHAMPSTEAD
TERMINAL
Height 1 ft.
Diameter 8 ins.
Plinth circular 9 ins.
Price £1 2 6



No. 210



No. 211

No. 211
CLAPHAM TERMINAL
Height 1 ft. 6 ins.
Diameter 1 ft.
Plinth square 10½ ins.
Price £1 17 6

No. 212
HATCHAM TERMINAL
Height 1 ft. 11 ins.
Diameter 1 ft.
Plinth across 10 ins.
Price £2 18 0



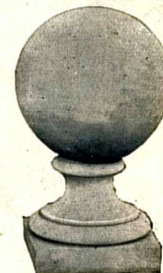
No. 212



No. 213

No. 213
GATE PIER TERMINAL
Height 2 ft. 7 ins.
Diameter 2 ft.
Plinth across 1 ft. 6 ins.
Price £9 0 0

No. 214
DARTFORD TERMINAL
Height 2 ft. 2 ins.
Diameter 1 ft. 3 ins.
Plinth square 1 ft.
Price £2 15 0



No. 214

SECTION III

TERMINALS

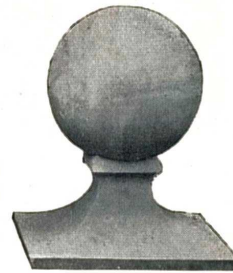
PAGE 29



No. 215

No. 215
WEBBER URN
Height 1ft. 8ins.
Diameter 1ft.
Plinth square 6ins.
Price £4 5 0

No. 216
GIRSBY TERMINAL
Height 2ft.
Diameter 1ft. 2ins.
Plinth square 1ft. 7ins.
Price £3 0 0
Note.—Larger and smaller sizes of this Terminal can be supplied.
Prices upon application.



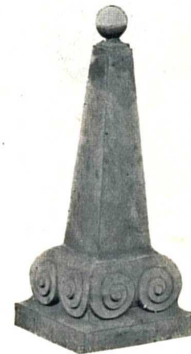
No. 216



No. 217

No. 217
PINEAPPLE
Height 4ft. 6ins.
Diameter 2ft. 4½ins.
Plinth square 1ft. 9ins.
Price £25 0 0

No. 218
SUGAR LOAF
Height 3ft.
Plinth square 1ft. 2ins.
Price £3 15 0



No. 218



No. 220


No. 220
GRIFFIN
Height 2ft.
Diameter across wings
1ft. 5½ins.
Price £6 12 6

No. 222
APPLETON TERMINAL
Height 3ft. 1½ins.
Diameter 2ft. 3½ins.
Plinth square 11ins.
Price £9 0 0



No. 222


PAGE 30
TERMINALS
SECTION III



No. 224

No. 224
MAIDENHEAD TERMINAL
Height 1ft. 2½ins.
Diam of ball 1ft.
Plinth square 1ft.
Price £1 15 0


No. 224a (Ditto).
Height 1ft. 3½ins.
Diam of ball 1ft. 1in.
Plinth square 1ft. 1in.
Price £1 17 6



No. 225


No. 225
LAMBETH TERMINAL
Height 2ft. 1in.
Diam of ball 1ft. 1in.
Plinth square 1ft.
Price £2 10 0

No. 225a (Ditto).
Height 2ft. 8ins.
Diam of ball 1ft. 4ins.
Plinth square 1ft. 6ins.
Price £5 0 0




No. 226

No. 226
HUDDERSFIELD TERMINAL
Height 1ft. 11ins.
Diameter 1ft. 2ins.
Plinth across 1ins.
Price £2 17 6




No. 233

No. 233
RAWDON TERMINAL
Height 1ft. 5ins.
Diameter 10ins.
Circular plinth 9½ins.
Price £1 12 6



No. 234

No. 234
PLAIN BALL TERMINALS
8ins. diameter £0 12 0
9ins. „ 0 14 0
10ins. „ 0 16 0
11ins. „ 0 18 0
12ins. „ 1 2 0
13ins. „ 1 6 0
14ins. „ 1 12 0
15ins. „ 1 16 0
16ins. „ 2 0 0
17ins. „ 2 5 0
18ins. „ 2 10 0
20ins. „ 3 17 6
24ins. „ 5 15 0



No. 239

No. 239
PLAIN BALL TERMINALS
with plinth.

Ball.	Plinth, inches.	Price
8ins.	13×13×2½	£0 18 6
9ins.	14×14×2½	1 1 0
10ins.	15×15×2½	1 3 6
11ins.	16×16×2½	1 5 6
12ins.	17×17×3	1 9 6
13ins.	18×18×3	1 14 0
14ins.	19×19×3	2 1 0
15ins.	20×20×3	2 5 0
16ins.	21×21×3	2 9 6
17ins.	22×22×3½	2 16 0
18ins.	23×23×3½	3 1 0
20ins.	25×25×3½	4 10 0
24ins.	29×29×4	6 10 0

PULHAM & SON
71 NEWMAN ST LONDON W



SUNDIALS

A COMPREHENSIVE variety of designs are illustrated in this section, and here again the question of surroundings should be considered.

PROBABLY the best position for a Sundial is at the junction of two or more paths, where it may be seen from several points of interest, or in the centre of a formal part of the garden. In some cases a Sundial placed at the side of a long walk becomes an object of great charm.

ESTIMATES will be submitted for special designs. The necessary particulars and dimensions should be forwarded with either a photograph or sketch.

THE prices quoted do not include dial plates, which vary in cost, according to the amount of engraving on them, and if made to exact latitude. An equation table, by which the mean time is ascertained, can be engraved on a new plate. See Figure B512.

A SUITABLE motto can, if desired, be introduced on either the dial plate or pedestal for an extra cost.

MOTTOES

A Clock the time may wrongly tell.
I, never, if the sun shine well.

Docet Umbra.
(The shadow teaches).

Horas non numero nisi serenas.
(I count the bright hours only).

Sol est lux et gloria mundi.
(The sun is the light and glory of the world).

Fugit irreparabile Tempus.
(Time flies never to be retrieved).

Pereunt et Imputantur.
(They pass by and are mentioned).

Ambiguus alis Sabilis hora volet.
(The gliding hour flies on its fitful wings).

Tempus fugit.
(Time flies).

Sic transit gloria mundi.
(So passes away the glory of the world).

Correct the past.
Direct the present,
Discern the future.

Tyme wanes away
As floweres decaye.

Time the devourer of all things.

PAGE 32

SUNDIALS

SECTION IV

BEST BRASS
HORIZONTAL DIAL PLATE.

Without Equation Table.



FIG. B 513.

Brass Plain Horizontal Sundial, to illustration, divided to 5 minutes, Open Gnomon, but without motto.

	£	s.	d.
10 inches diameter	5	18	0
12 " " " " " " " " " " " "	6	15	0
15 " " " " " " " " " " " "	10	10	0
18 " " " " " " " " " " " "	14	5	0

ANTIQUE DESIGN SUNDIAL.



FIG. B 403.

Brass Sundial, as illustration, divided to 5 minutes.

	£	s.	d.
8 inches diameter	3	0	0
9 " " " " " " " " " " " "	3	7	6
10 " " " " " " " " " " " "	3	12	0
12 " " " " " " " " " " " "	5	3	6

MOTTOES EXTRA.

SPECIALISTS
IN
DIALLINGDIAL PLATES
AND PEDESTALS
Made to any Design.

Mottoes, &c., extra,
according to length
and style, also size
of Dial Plate.

ALL DIALS ILLUSTRATED ON THIS PAGE ARE MADE MATHEMATICALLY CORRECT TO LATITUDE.

Latitude, Longitude,
and Height above
Sea Level of the
Place where fixed,
can also be engraved
on Dials.

BEST BRASS
HORIZONTAL DIAL PLATE.

With Equation Table in Columns.

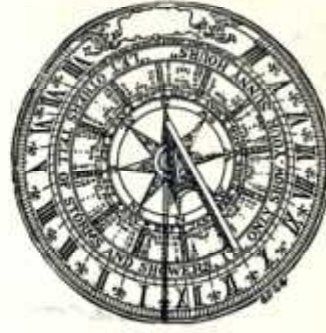


FIG. B 512.

Brass Horizontal Sundial, with Equation Table in columns, divided to 5 minutes, Open Gnomon, as illustration, but without Motto.

	£	s.	d.
10 inches diameter	8	8	0
12 " " " " " " " " " " " "	10	2	6
15 " " " " " " " " " " " "	14	5	0
18 " " " " " " " " " " " "	20	5	0

THE "ARMILLARY" SPHERE
OR OLD DUTCH SUNDIAL.

FIG. B 406.

Sundial, as illustration, in lead and iron, gilt finish.

	£	s.	d.
12 inches diameter	4	10	0
15 " " " " " " " " " " " "	6	15	0
18 " " " " " " " " " " " "	9	0	0

In copper and gunmetal finish antique.

	£	s.	d.
12 inches diameter	8	0	0
15 " " " " " " " " " " " "	12	0	0
18 " " " " " " " " " " " "	15	0	0

Gilt with best English gold leaf extra.

FOLGER & SON

11, NEWMAN ST. LONDON, W.

SECTION IV

SUNDIALS

PAGE 33

ANTIQUE BRASS REPRODUCTION DIAL PLATES.



Fig. P 4204

6½ ins. diameter 12/6

Only made in this size.

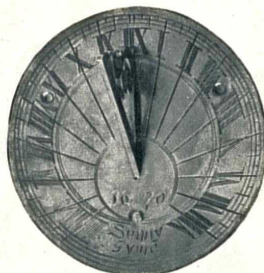


Fig. P 4203

6 ins. diameter	£	s.	d.
8 " "	..	0	13 0
10 " "	..	1	0 0
12 " "	..	1	9 0
18 " "	..	2	1 0
18 " "	..	5	10 0



Fig. P 4232

6 ins. diameter	£	s.	d.
8 " "	..	1	4 0
10 " "	..	1	12 0
12 " "	..	2	4 0
18 " "	..	3	0 0
18 " "	..	8	0 0

The Sundial Plates illustrated on this page are not made specially to the latitude of the place where they are to be fixed, but will tell correct solar time to within a few minutes anywhere in England. For dials made mathematically correct see previous page.

FLOATING SUNDIAL.

(PATENT APPLIED FOR)

When placed upon water in the sunshine the Dial will automatically "Set" itself, giving true Solar Time also the true Compass Points.

Suitable for placing in a Birdbath, Lily Pool, Etc.

Shows Solar and Summer Time.

The "KENT."



Fig. B 402

BRASS SUN-DIAL.

THE "KENT."

6 ins. diameter	£	s.	d.
8 " "	..	0	15 0
10 " "	..	1	4 0
12 " "	..	1	10 0
12 " "	..	2	5 0

For Orders of not less than One Dozen at a time the above dial can be made correct to any one latitude.



Fig. B. 2132. FLOATING SUNDIAL.

5 in. metal dial plate 15/-

Exclusive of the bowl which we do not supply.

PULHAM & SON

71 NEWMAN ST LONDON W

PAGE 34

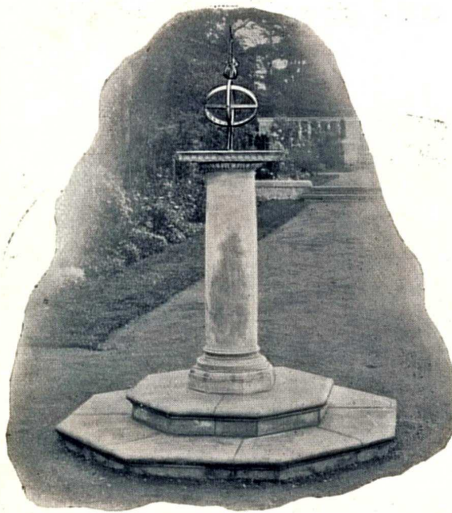
SUNDIALS

SECTION IV

No. 351
CROMER SUNDIAL
Height of pillar 3ft. 6ins.
Diameter of lower base 5ft. 9ins.
Depth " " 6ins.
Diameter of upper base 3ft. 10ins.
Depth " " 5ins.
Price complete £29 5 0
Pillar only 10 10 0
Upper base 5 15 0
Lower base 13 0 0
Takes a 12in. dial plate or smaller.
Designed by P. R. Allen, Esq.



No. 351



No. 352

No. 352
WALMER SUNDIAL
Height of pillar 3ft. 7ins.
Diameter of lower base 5ft.
Depth " " 5ins.
Diameter of upper base 3ft.
Depth " " 5ins.
Price complete £19 0 0
Pillar only 6 5 0
Upper base 4 10 0
Lower base 8 5 0
Takes a 12in. dial plate or smaller.
Designed by Thos. H. Mawson, Esq., Hon.
A.R.I.B.A.

PULHAM & SON

71 NEWMAN ST LONDON W.

SECTION IV

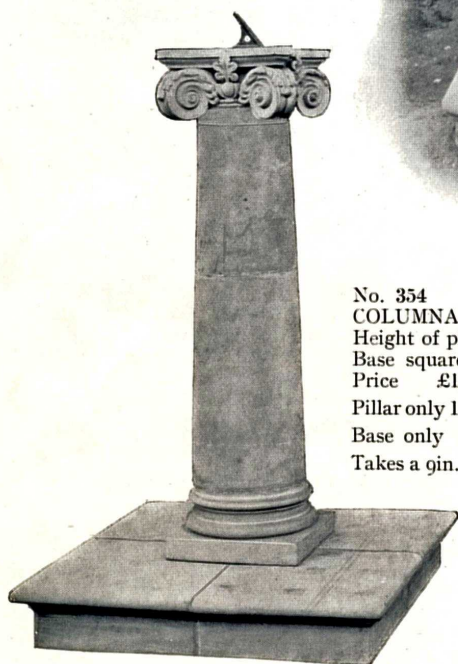
SUNDIALS

PAGE 35

No. 353
MALONE SUNDIAL
 Height of pillar 3ft. 6ins.
 Diameter of base 3ft.
 Depth of base 5ins.
 Price £16 10 0
 Pillar only, 12 0 0
 Base only, 4 10 0
 Takes a 1 1/4 in. dial plate, or smaller.
 Inscription—
 Raised letters 1/6 each.
 Incised letters 9d. each.



No. 353



No. 354

No. 354
COLUMNAR SUNDIAL
 Height of pillar 4ft. 2ins.
 Base square, 3ft. x 5ins. thick.
 Price £16.10 0
 Pillar only 12 0 0
 Base only 4 10 0
 Takes a 9 in. dial plate, or smaller.

No. 355
 MASSACHUSETTS SUNDIAL
 Height of pillar 3ft. 2ins.
 Diameter of base 3ft.
 Depth of base 5ins.
 Price complete £12 5 0
 Pillar only 7 15 0
 Base only 4 10 0
 Takes a 12in. dial plate or smaller.



No. 355



No. 356

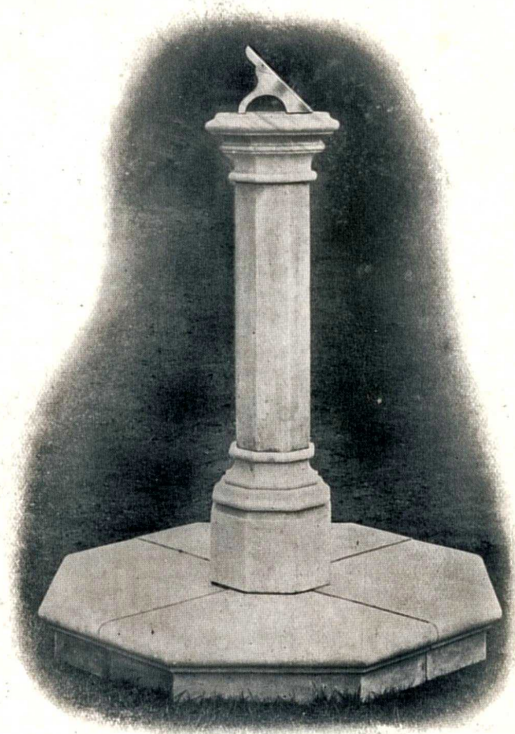
No. 356
 FLORA SUNDIAL
 Height of pillar 3ft. 10ins.
 Diameter of base 3ft.
 Depth of base 5ins.
 Price complete £12 10 0
 Pillar only 8 0 0
 Base only 4 10 0
 Takes a 14in. dial plate or smaller.

SECTION IV

SUNDIALS

PAGE 37

No. 357
 WINCHFIELD SUNDIAL
 Height of pillar 3ft. 2ins.
 Diameter of pillar shaft 6ins.
 Diameter of base 3ft.
 Depth of base 5ins.
 Price complete £7 5 0
 Pillar only 2 15 0
 Base only 4 10 0
 Takes an 8in. dial plate or smaller.



No. 357



No. 358

No. 358
 BRIGHTON SUNDIAL
 Height of pillar 3ft. 3ins.
 Diameter of base 3ft.
 Depth of base 5ins.
 Price complete £12 0 0
 Pillar only 7 10 0
 Base only 4 10 0
 Takes a 10in. dial plate.

BULNAN & SON

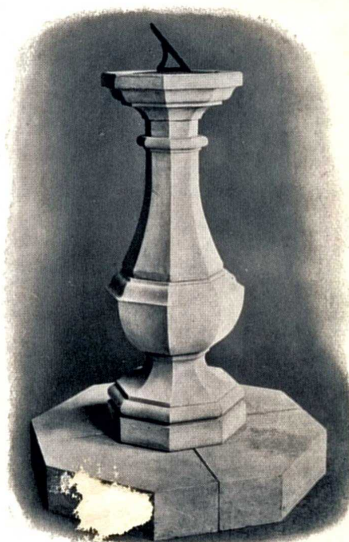
71, NEWMAN ST. LONDON W.

PAGE 38

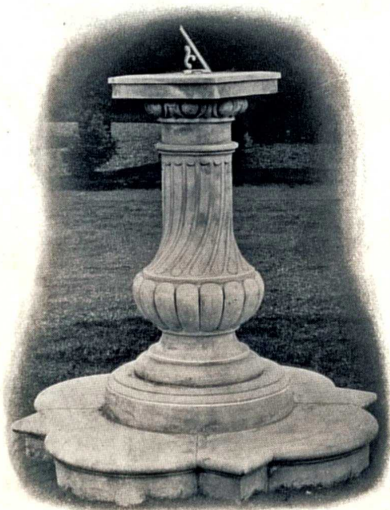
SUNDIALS

SECTION IV

No. 359
BRAGBURY SUNDIAL
Height of pillar 3ft. 11ins.
Diameter of base 3ft.
Depth of base 6ins.
Price complete £11 15 0
Pillar only 7 15 0
Base only 4 10 0
Takes a 12in. dial plate.



No. 359



No. 360

No. 360
PIGGOTTS MANOR SUNDIAL
Height of pillar, with small circular
base, 3ft. 10ins.
Diameter of lower base 4ft.
Depth of base 6ins.
Price complete £16 15 0
Pillar with small
circular base 10 0 0
Base only 6 15 0
Takes a 12in. dial plate.

PULHAM & SON

71 NEWMAN ST LONDON W

SECTION IV

SUNDIALS

PAGE 39

No. 361
WORTH PARK SUNDIAL
 Height of pillar with star base 3ft. 10ins.
 Diameter of lower base 4ft.
 Price complete £18 10 0
 Pillar with star base
 £11 15 0
 Base only 6 15 0
 Takes a 12in. dial plate.



No. 361



No. 364

No. 364
KINGSDOWN SUNDIAL
 Height of pillar 4ft.
 Diameter of base 3ft. 9ins.
 Depth of base 6ins.
 Price complete £14 5 0
 Pillar only 8 15 0
 Base only 5 10 0
 Takes a 10in. dial plate or smaller.
 Inscription—Raised Letters 1/6 each.
 Incised Letters 9d. each.
 If desired provision can be made in
 the base for planting.

PAGE 40
SUNDIALS
SECTION IV



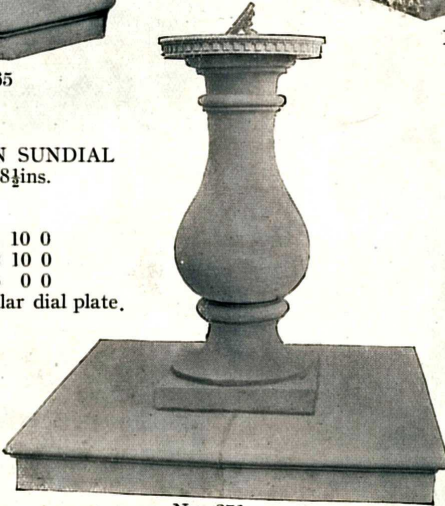
No. 365

No. 365
SANDYFORD SUNDIAL
Height of pillar 3ft. 4ins.
Diameter of pillar shaft 8½ins.
Diameter of base 3ft. *£8.7.6.*
Depth of base 5ins. ~~£7.17.0~~
Price complete
Pillar only 3 17 6
Base only 4 10 0
Takes a 10in. dial plate.



No. 370

No. 370
PEARL SUNDIAL
Height overall 3ft. 3ins.
Base square 1ft. 10ins.
Depth of base 5ins.
Price complete £6 10 0
" with upper small 16in. base £4 8 0
Price of bottom base only £2 2 0
Takes an 8in. circular dial plate.




No. 371



No. 373

No. 373
MARDEN SUNDIAL
Height overall 2ft. 5ins.
Base square 1ft. 3ins.
Depth of base 2½ins.
Price complete £3 3 0
Takes a 6in. circular dial plate.



No. 376

No. 376
CLUMBER SUNDIAL
Height of pillar 2ft. 9½ins.
Upper base 1ft. 6ins. square 3ins. thick
Lower base 2ft. square 3½ins. thick
Price complete with 2 bases £5 0 0
" with upper base only 3 5 0
" of lower base only 1 15 0
Takes a 6in. circular dial plate.

FULHAM & SON
71 NEWMAN ST LONDON W

SECTION V

SEATS

PAGE 41



No. 401 DUNMURRY SEAT.

Length across front 13ft. 6ins. Height 3ft. 8ins. Price, exclusive of step base, £115 0 0
 Can be made larger or smaller diameter, also with ornament on top rail as in No. 402



No. 402 NORBITON SEAT

Length 12ft. 10ins. Height 3ft. 8ins. Price £92 0 0

NOTE.—This seat can be supplied straight or circular, also without ornament on back rail.

PAGE 42

SEATS

SECTION V



No. 403 PENNSYLVANIA SEAT
Length 7ft. Height 3ft. Price £40 0 0



No. 404 THORNBYS SEAT
Length across front 9ft. Height 3ft. Price £65 0 0
Can be made larger or smaller diameter, also with additional arm brackets.

PULHAM & SON

71 NEWMAN ST LONDON W

SECTION V

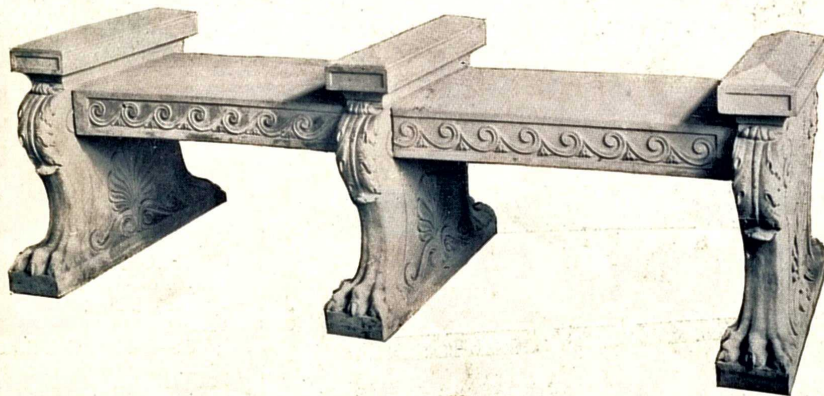
SEATS

PAGE 43



No. 405
 BLENHEIM SEAT
 Length 6ft. 9ins.
 Height 3ft. 8ins.
 Price £50 0 0

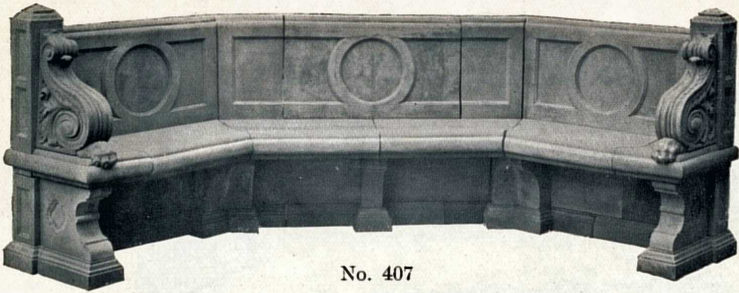
NOTE.—This seat can be supplied without ornament on back rail.



No. 406
 ROMAN SEAT
 Length 5ft. 9ins.
 Height 2ft.
 Price £20 0 0

Designed by Thos. H. Mawson, Esq., Hon. A.R.I.B.A.

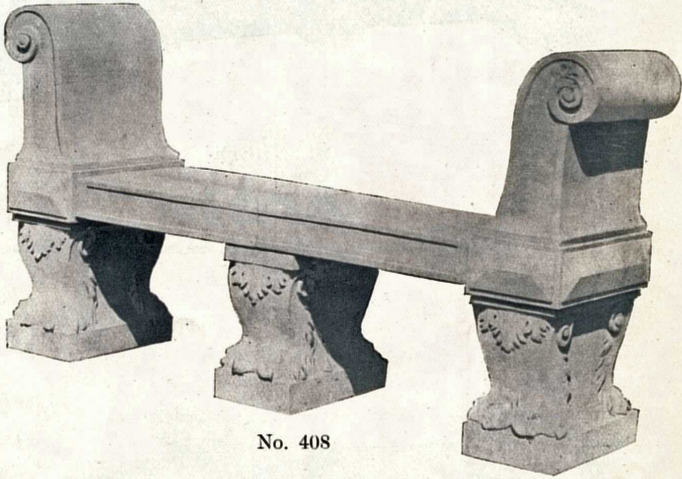
PAGE 44
SEATS
SECTION V



No. 407

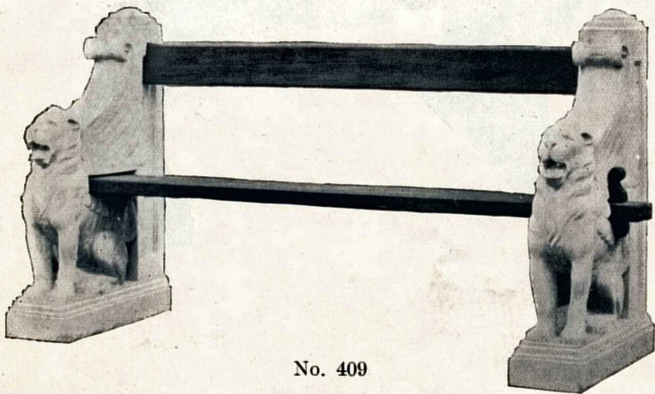
No. 407
PAINS HILL SEAT
Length and plan as
required.
Height 3ft.
Price according to
size.

No. 408
BILLESDEN SEAT
Length 6ft.
Height 3ft.
Price £17 10 0



No. 408

No. 409
CLIPSTONE SEAT
Length over ends 6ft.
Height 3ft. 2ins.
Price £18 18 0
Note :—Teak or Oak Seat is
roins. wide with back rail
5ins. Can be made to
various lengths.



No. 409

PULNAM & SON
71 NEWMAN ST LONDON W.



FOUNTAINS

MANY of the smaller fountains shown in this section are suitable either for the Conservatory or the Garden.

FOR the outdoor fountain, it is necessary to build a brick or concrete basin, upon which to fix the Pulhamite stone kerb. The concrete portion of the basin must be sunk into the ground to allow a finished depth of from 1ft. to 2ft. 6ins. or more, according to the size of the basin. A small brick chamber should be built outside the basin to contain the tap and turncock. A "draw off" tap must be placed in this chamber, so that the pipes may be emptied during frosty weather, otherwise they are liable to burst.

THE prices quoted do not include plumber's work or fixing. We prefer to undertake this work, and recommend clients to take advantage of our services, as fountains are difficult to fix properly, and if done by inexperienced men, are sometimes unsuccessful. Heights of centres are measured from water line.

WE have a variety of designs for larger fountains, and are pleased to submit photographs when desired.

WHEN ordering jets it is necessary to state what pattern is required. Jets and connecting nipples are made to a standard thread for each size. Extra jets can be ordered at any time by quoting the letter, or size of nipple. "A" size is made for a supply pipe of not less than $\frac{1}{4}$ -inch; "B" for $\frac{1}{2}$ -inch; "C" for $\frac{3}{4}$ -inch; and "D" for 1 inch, inside diameter, for lead or copper pipe. The nipple must be soldered to the pipe, or a special nipple can be supplied to screw to an iron pipe.

IT is important that the following particulars should be given:—Size of supply pipe, whether lead, copper or iron; diameter of basin into which the jet is to play; the height of the central figure or ornament.

JETS can also be made to any special design, prices of which can be had on application.

SECTION VI

FOUNTAINS

PAGE 47



No. 433	EWELL FOUNTAIN	Price as shown	£197 0 0
Diameter of basin 24ft.	Height of centre 8ft. 6ins.	" centre only	105 0 0
Diameter of tazza 4ft.		" basin and vases	92 0 0
Height of kerb 10 1/2 ins.		" basin without vases	72 0 0

A suitable figure can be substituted for floral centre.

PAGE 48

FOUNTAINS

SECTION VI



No. 435 MADRESFIELD

Diameter of basin 25ft.

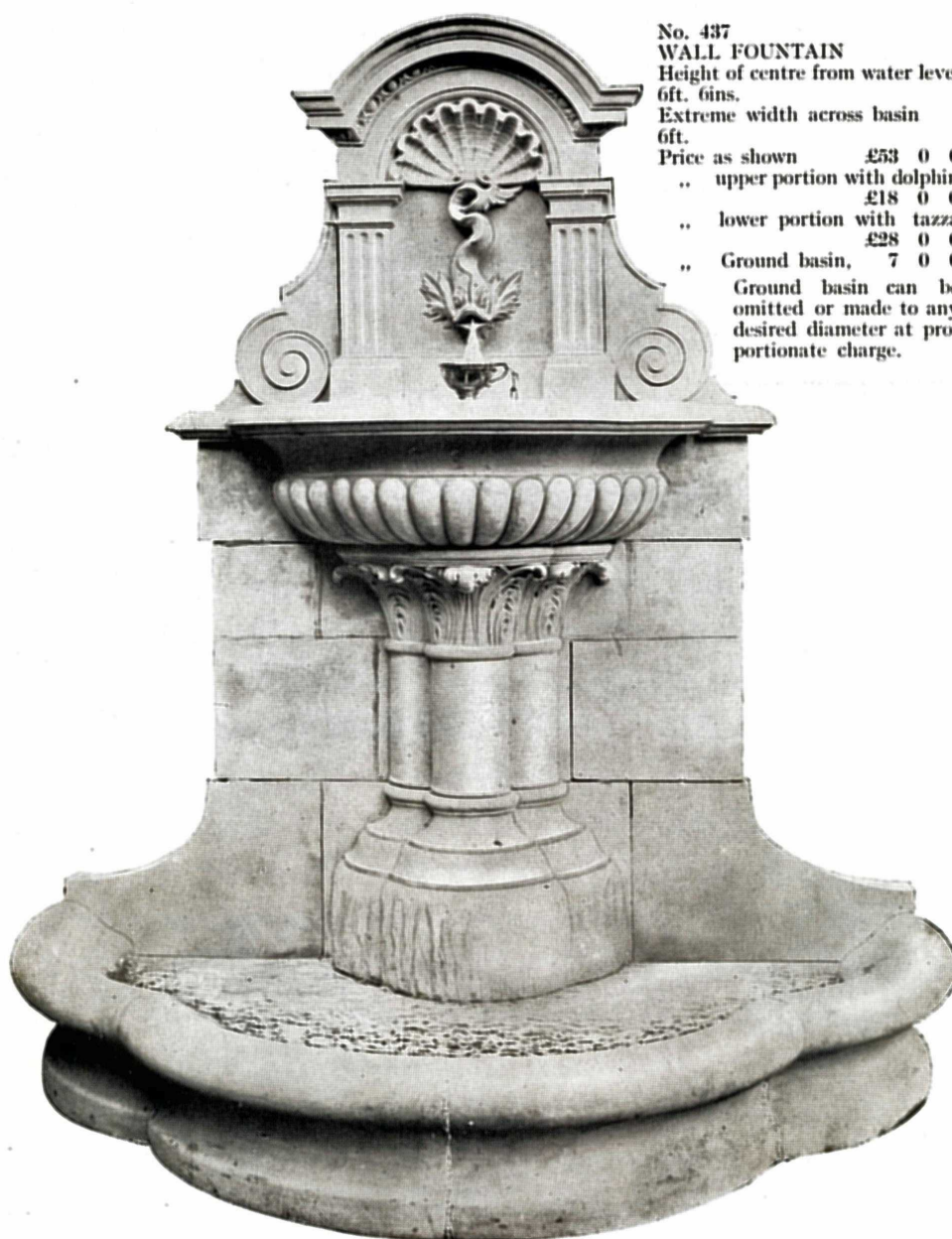
Height of figure 11ft.

Price by arrangement.

SECTION VI

FOUNTAINS

PAGE 49



No. 437
WALL FOUNTAIN
Height of centre from water level
6ft. 6ins.
Extreme width across basin
6ft.
Price as shown £53 0 0
.. upper portion with dolphin £18 0 0
.. lower portion with tazza £28 0 0
.. Ground basin, 7 0 0
Ground basin can be
omitted or made to any
desired diameter at pro-
portionate charge.

PAGE 50

FOUNTAINS

SECTION VI



No. 438

No. 438
PRITTLEWELL FOUNTAIN CENTRE
Height 4ft. 6ins.
Diameter of tazza 5ft.
Price £150 0 0

Any figure of suitable proportions can be used
with this centre.

Dolphins' heads in tazza and under the
figures can be fitted to play water.



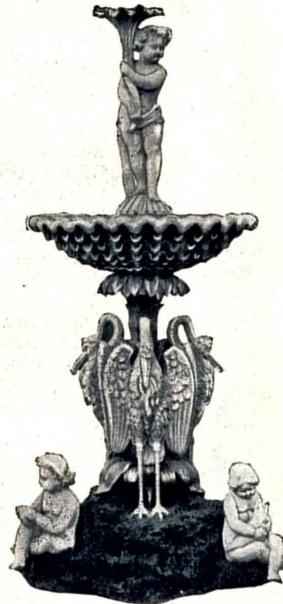
Illustration of complete fountain.

SECTION VI

FOUNTAINS

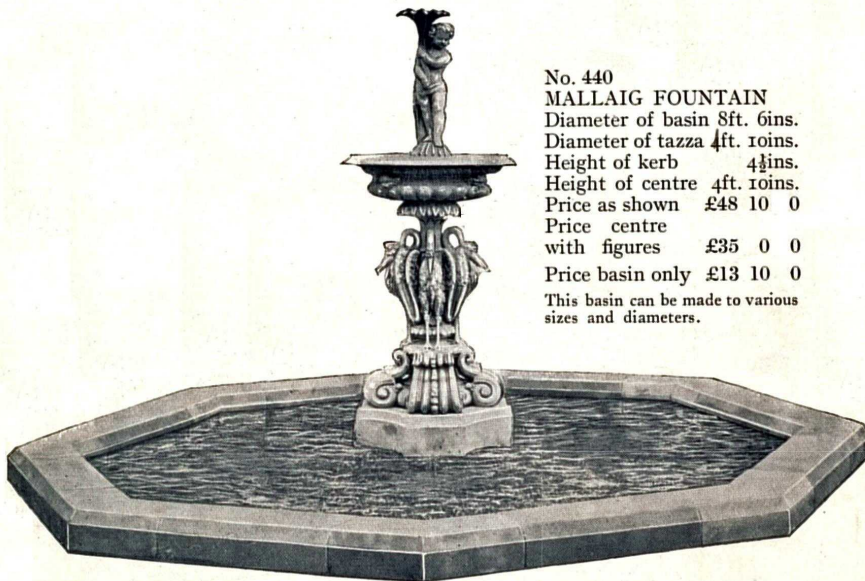
PAGE 51

No. 439
STORK CENTRE
with three figures at base
Height 4ft. 6ins.
Diameter of tazza 1ft. 7½ins.
Price £37 0 0
Price without 3 figures on
rock base £28 0 0
This centre could be used with
basins Nos. 440, 441, and 446.



No. 439

No. 440
MALLAIG FOUNTAIN
Diameter of basin 8ft. 6ins.
Diameter of tazza 4ft. 10ins.
Height of kerb 4½ins.
Height of centre 4ft. 10ins.
Price as shown £48 10 0
Price centre
with figures £35 0 0
Price basin only £13 10 0
This basin can be made to various
sizes and diameters.

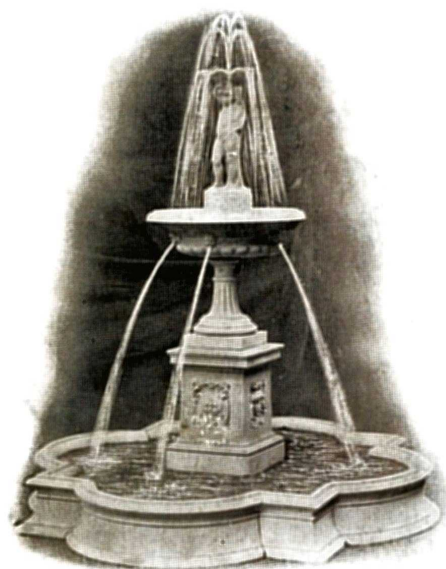


No. 440

PAGE 52

FOUNTAINS

SECTION VI



No. 441

No. 441
GIDDINGS FOUNTAIN
 Diameter of basin 5ft.
 Diameter of tazza 1ft. 10ins.
 Height of centre 4ft. 6ins.
 Price as shown £20 13 6
 Price figure and rock under same £3 10 6
 Price tazza and foot 3 10 0
 Price pedestal 3 3 0
 Price basin, 5ft. diameter 10 10 0
 A basin 7ft. diameter can be supplied. Price £14 10 0

No. 443
HATFIELD FOUNTAIN
 Diameter of basin 5ft.
 Diameter of tazza 2ft. 4½ins.
 Height of centre 6ft. 3ins.
 Price £32 3 0
 Price figure and rock under same £6 5 0
 Price tazza 2ft. 4½ins. diameter £8 10 0
 Price pedestal 6 18 0
 Price basin, 5ft. diameter 10 10 0
 A basin 7ft. diameter can be supplied. Price £14 10 0
 This fountain is very suitable for conservatory or interior.



No. 443

SECTION VI

FOUNTAINS

PAGE 53

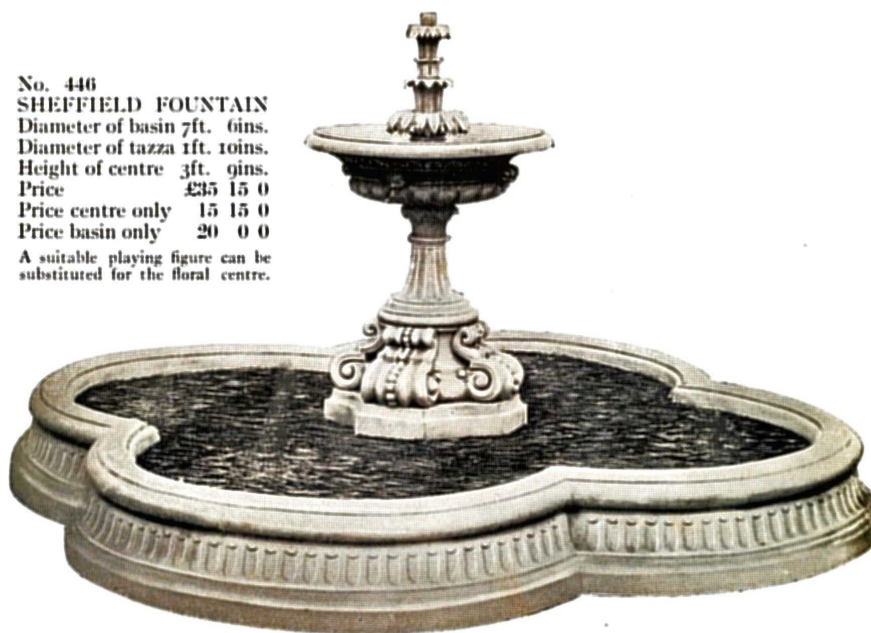


No. 444

No. 444
SUNDERLAND FOUNTAIN
 Diameter of water basin 12ft.
 Diameter of tazza 2ft. 8ins.
 Height of centre 8ft. 6ins.
 Price £195 0 0
 If without outer planting beds
 £170 0 0

No. 446
SHEFFIELD FOUNTAIN
 Diameter of basin 7ft. 6ins.
 Diameter of tazza 1ft. 10ins.
 Height of centre 3ft. 9ins.
 Price £35 15 0
 Price centre only 15 15 0
 Price basin only 20 0 0

A suitable playing figure can be substituted for the floral centre.



No. 446

PAGE 54

FOUNTAINS

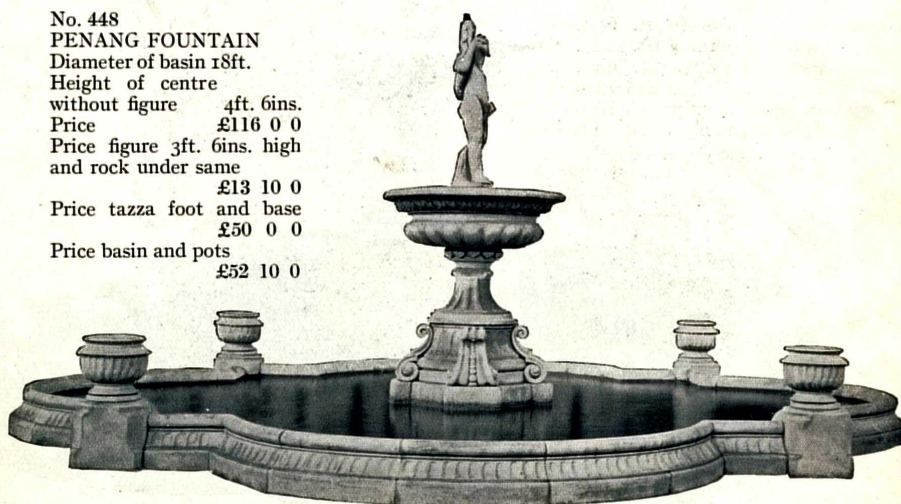
SECTION VI

No. 447
 LANFINE FOUNTAIN CENTRE
 Diameter of tazza 3ft. 9ins.
 Height to top of figure 5ft. 6ins.
 Price £95 0 0
 Price, figure only 5 0 0
 Price, tazza and base 90 0 0
 Other figures could be used.



No. 447

No. 448
 PENANG FOUNTAIN
 Diameter of basin 18ft.
 Height of centre
 without figure 4ft. 6ins.
 Price £116 0 0
 Price figure 3ft. 6ins. high
 and rock under same
 £13 10 0
 Price tazza foot and base
 £50 0 0
 Price basin and pots
 £52 10 0



No. 448

PULHAM & SON

71, NEWMAN ST. LONDON W.

SECTION VI

FOUNTAINS

PAGE 55



No. 453 HART FOUNTAIN BASIN

Length over all 7ft. 6ins. Width over all 3ft. 9ins. Depth 9ins.

Price £12 10 0

Can be made in larger sizes.



No. 181 ROCKERY STONE

Westmorland, Norfolk Sandstone, Kent Rag, Derbyshire Grit, Cheddar, etc.

York Crazy and Squared Rectangular Paving, Walling Stone, etc.

Prices quoted for truck loads delivered to nearest station.

The above view is of the Royal Horticultural Rock Gardens at Wisley constructed by Pulham & Son.

PAGE 56

FOUNTAIN JETS

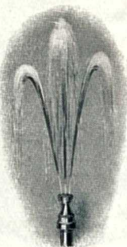
SECTION VI



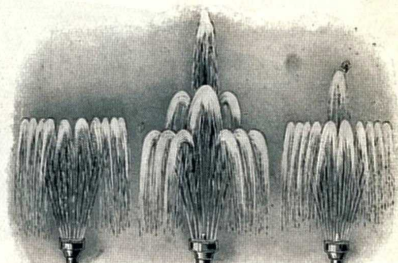
No. 20
Single Hole Jet
Prices
A .. 3/-
B .. 4/-
C .. 5/9
D .. 7/6



No. 21
Two Hole Jet
Prices
A .. 3/3
B .. 4/6
C .. 6/3
D .. 10/-



No. 22
Three Hole Jet
Prices
A .. 4/-
B .. 5/-
C .. 7/6
D .. 11/-



No. 23
Rose Jet
1, 2, 3 or 4 rows of holes.
Prices
A .. 7/-
B .. 8/6
C .. 16/-
D .. 21/-



No. 24
Convolvulus Jet
Prices
B .. 20/-
C .. 30/-
D .. 40/-

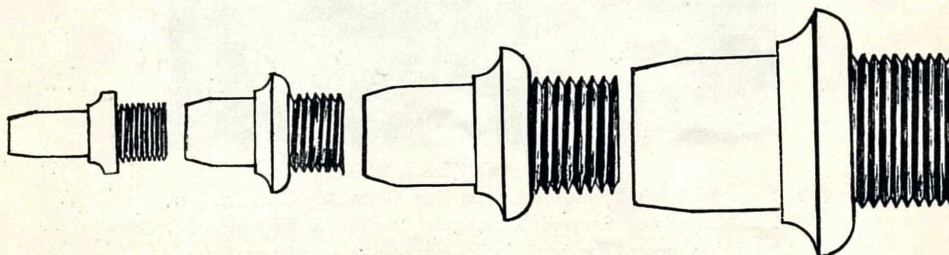
No. 25
Combination of
the Dome and
Convolvulus Jets
can be supplied.
Prices
C .. 52/-
D .. 72/-



No. 26
Dome Jet
Prices
B .. 20/-
C .. 30/-
D .. 40/-

No. 28 Umbrella Jet. Prices A 8/- B 10/- C 18/- D 23/-
No. 29. Prince of Wales Feathers Jet. Prices A 9/- B 11/6 C 16/-

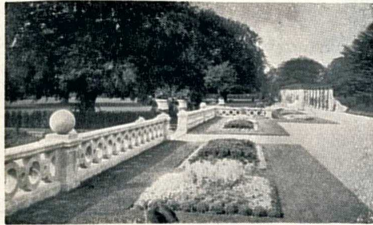
Brass connecting nipples for lead and copper pipe, to fit Jets A, B, C and D, shown full size



A .. 1/8 B .. 2/6 C .. 3/4 D .. 4/9

PULHAM & SON

71 NEWMAN ST LONDON W



BALUSTRADES AND TERRACES

GREAT care should be taken, in selecting the design of a Balustrade, to follow the style of the adjacent building.



AS a general rule, it is safe to consider the Terrace as a feature upon which the most ornate subjects may be introduced. Vases and figures always show to the best advantage on a Terrace.



IT is usually desirable that the "lay out" of the ground in close proximity to the house should be as formal as possible, and a Balustraded Terrace probably offers the best means to this end. We suggest that we should be consulted as to the most suitable design and treatment. We will then submit such proposals as we consider most suited to the position, taking into consideration the architecture of the house, and the nature and contours of the surroundings.



IF Balustrading is badly fixed, the whole effect may be marred, and reliability forfeited. For this reason we prefer to fix our own work, having a special staff of men for the purpose. We are able to estimate for this, including foundations, after a preliminary visit.



THE prices given are for straight lengths only, circular and raking work being extra.

PAGE 58

BALUSTRADES

SECTION VII



No. 461

No. 461
BRIDGNORTH BALUSTRADE
Height 2ft.
Price per foot run £1 10 6
Piers 4 15 0
For Vase see No. 6




No. 463

No. 463
UCKFIELD BALUSTRADE
Height 3ft.
Price per foot run £3 3 0
Piers 6 6 0
For Vase see No. 4

PULHAM & SON

71 NEWMAN ST. LONDON W.


SECTION VII
BALUSTRADES
PAGE 59



No. 465

No. 465
MERROW BALUSTRADE
 Height 2ft. 3ins.
 Price per foot run £1 16 6
 Piers 5 0 0
 For Vase see No. 6

No. 466.
MILTON BALUSTRADE
 Height 2ft. 3ins.
 Price per foot run £1 17 6
 Piers 5 5 0
 For Vase see No. 4



No. 466

PAGE 60

BALUSTRADES

SECTION VII



No. 467

No. 467
 BLAKESLEY BALUSTRADE
 Height 3ft.
 Price per foot run £2 5 0
 Piers 8 5 0
 For Vase see No. 31
 Balusters could be placed closer
 together, also other designs of
 balusters introduced.

No. 468
 WARLINGHAM BALUSTRADE
 Height 2ft. 3ins.
 Price per foot run £2 5 0
 Piers 5 0 0
 For Vase see No. 15



No. 468

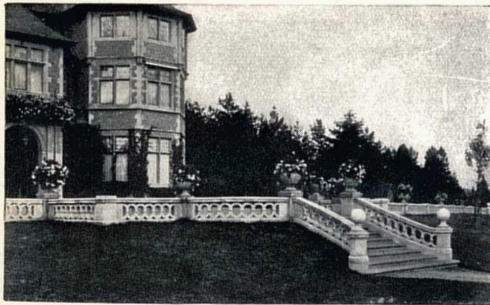
PULHAM & SON

71 NEWMAN ST LONDON W

SECTION VII

BALUSTRADES

PAGE 61



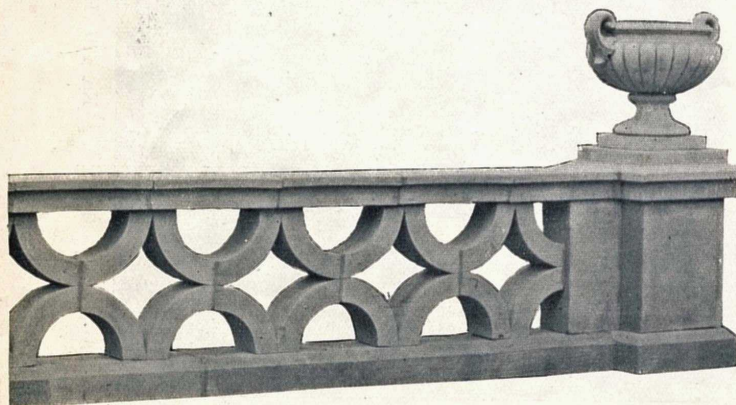
No. 469
FRIMLEY BALUSTRADE

No. 469



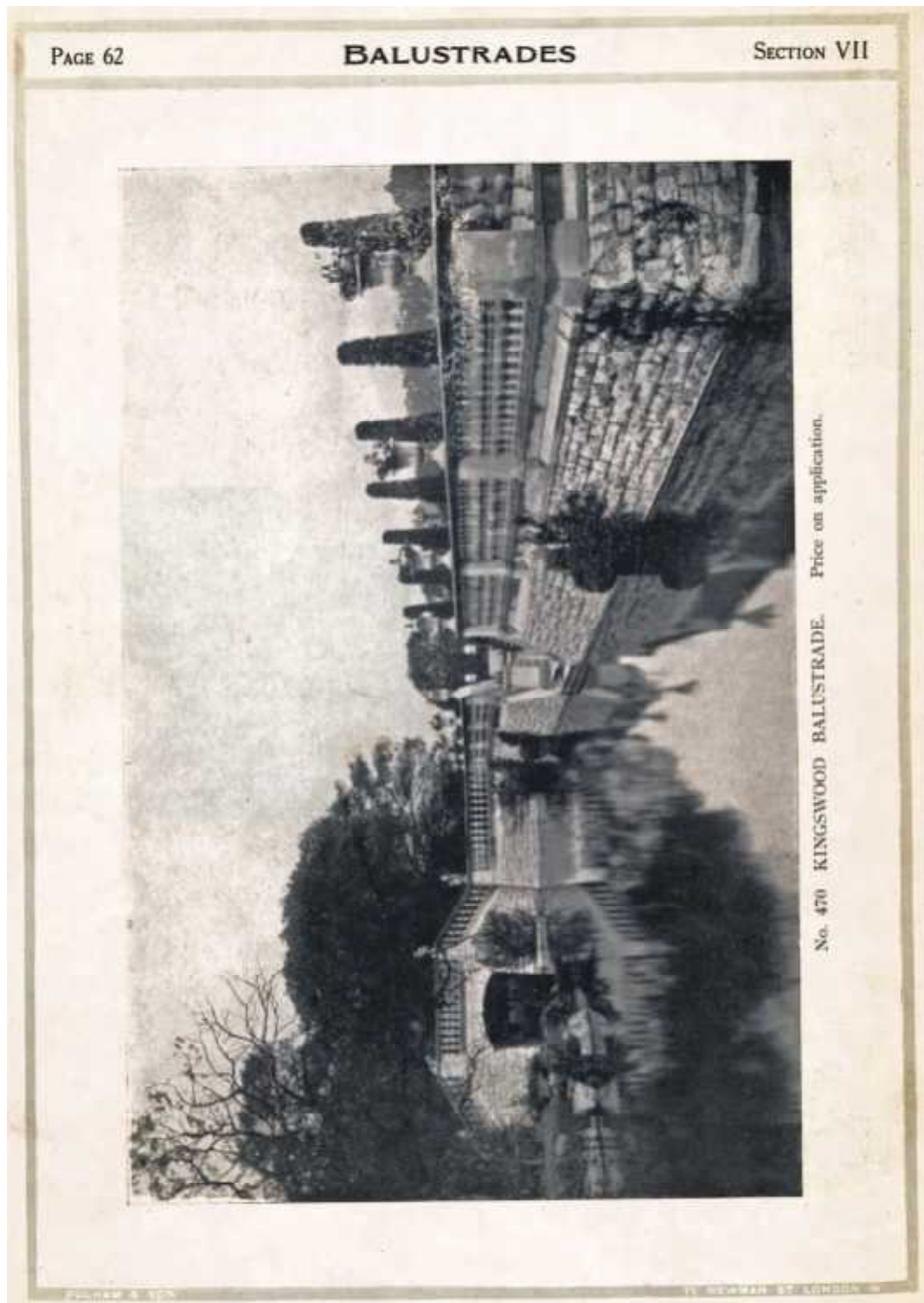
No. 470
KINGSWOOD BALUSTRADE
See also page 62
Bridge and Rock Work at "Kings-
wood," Sydenham Hill, by
Pulham & Son, to the design of
H.V. Lanchester, Esq., F.R.I.B.A.

No. 470



No. 475
RIPLEY BALUSTRADE
Height 2ft. 4ins.
Price per foot run £1 18 6
Piers 5 5 0
For Vase see No. 4

No. 475



SECTION VII

BALUSTRADES

PAGE 63

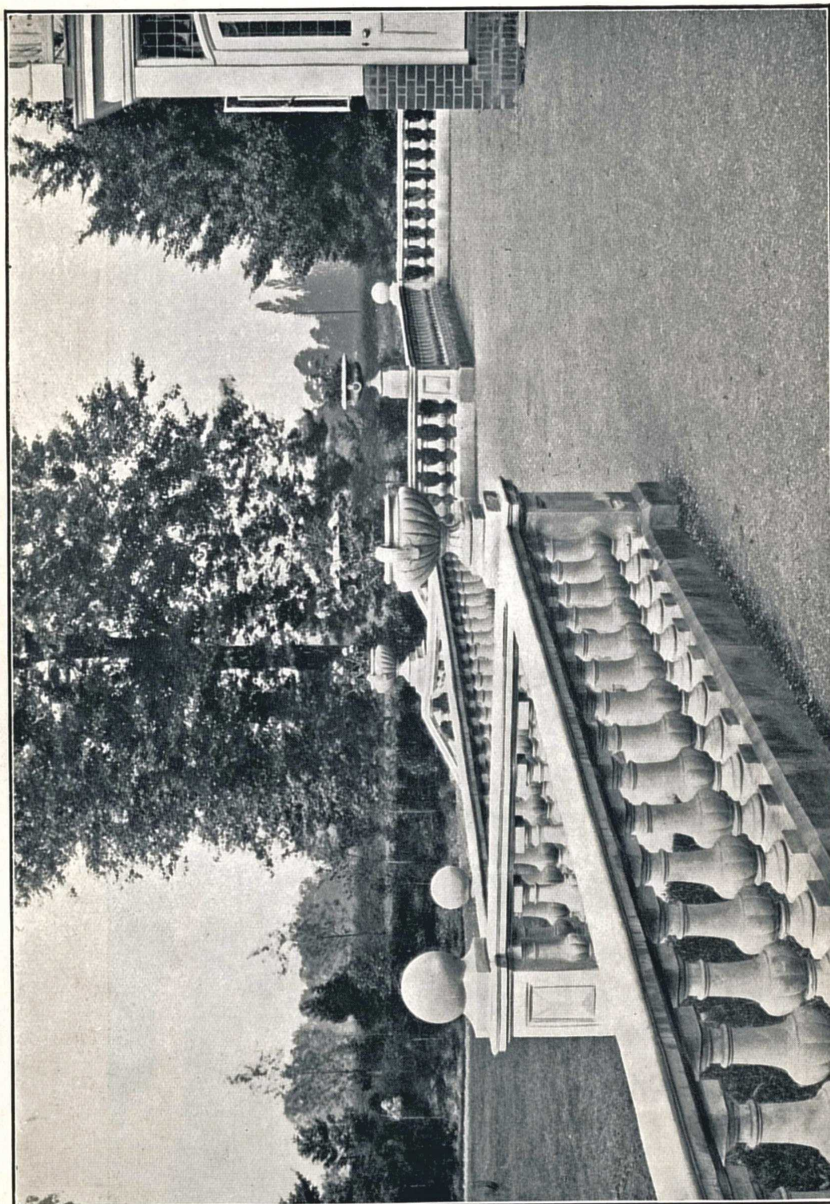


No. 474
HEATHERDEN BALUSTRADE
Height 2ft. 10ins.
Price per foot run £2 8 0
Piers 6 10 0

PAGE 64

BALUSTRADES

SECTION VII



No. 471
MAIDENHEAD BALUSTRADE
Made in various heights. Prices on application.

PULHAM & SON

71, NEWMAN ST. LONDON W.

SECTION VIII
FIGURES
PAGE 65



No. 491
TWIN FIGURES
To play water
Height 1ft. 9ins.
Base 8ins. diameter
Price £5 10 0



No. 492
BELPER FIGURE
To play water
Height 1ft. 6ins.
Price £3 10 0



No. 530
GIDDINGS FIGURE
To play water
Height 1ft. 6ins.
Price £2 15 6
Rock base 7ins. high
Price £0 15 0
Rock base 10½ins. high
Price £0 19 0



No. 493
FISH BOY
Height 2ft.
Base 6½ins. square
Price £3 15 0



No. 494
FISH GIRL
Height 2ft.
Base 6½ins. square
£3 15 0

PULHAM & SON
71, NEWMAN ST. LONDON W.

PAGE 66

FIGURES

SECTION VIII



No. 496

No. 496
SHEPHERDESS
Height 3ft.
Price £9 10 0

No. 497
LION
Height 2ft. 7ins.
Base 13½ins. square
Price £6 6 0
This can be made right
and left-handed.



No. 497

No. 520
STORK
Height 2ft. 5ins.
Plinth diameter 11ins.
Price £4 10 0



No. 520



No. 498

No. 498
HARVEY BOY
To play water.
Height 1ft. 3ins.
Price £6 6 0

No. 499
DIANA ROBING
Height 5ft. 2ins.
Price £32 0 0



No. 499

PULHAM & SON

71, NEWMAN ST. LONDON W.

SECTION VIII
FIGURES
PAGE 67



No. 503
LANFINE FIGURE
To play water
Height 2ft.
Price £5 0 0



No. 504
WAKING CUPID
Height 4ft. 10ins.
Price £12 12 0



No. 519
REED BOY
To play water
Height 3ft. 3ins.
Plinth 20ins. x 15ins.
Price £18 0 0



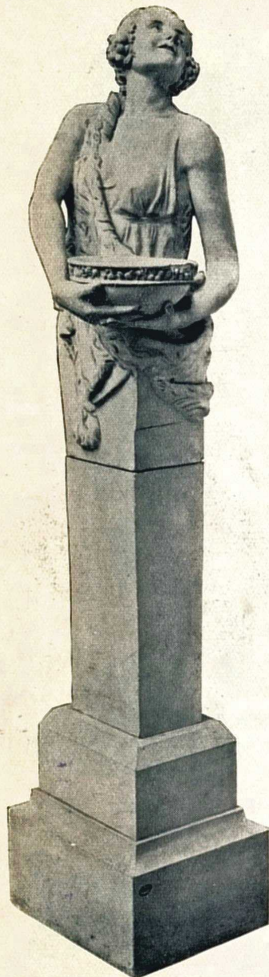
No. 522
FLORENTINE FIGURE
To play water
Height 2ft. 4ins.
Price £8 0 0

HULMAN & SON
11, NEWMAN ST. LONDON W.

PAGE 68

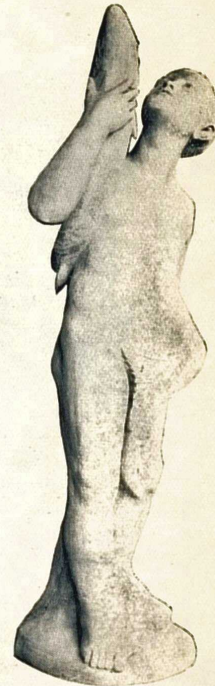
FIGURES

SECTION VIII



No. 526

No. 526
BACCHANTE
Height 5ft. 10½ins.
Plinth 1ft. 4ins. on face
Price £20 0 0
Can be made with shorter
Pedestal.



No. 701

No. 701
COMPTON FIGURE
to play water
Height 3ft. 6ins.
Price £12 0 0



No. 702

No. 702
MALWOOD FIGURE
Height 3ft.
Price £15 15 0



No. 703

No. 703
OWL
Height 6½ins.
Price 10/-



No. 534a
FROG
with open mouth to play
water
Height 4ins.
Price 9/-
Frog with closed mouth see
No. 534

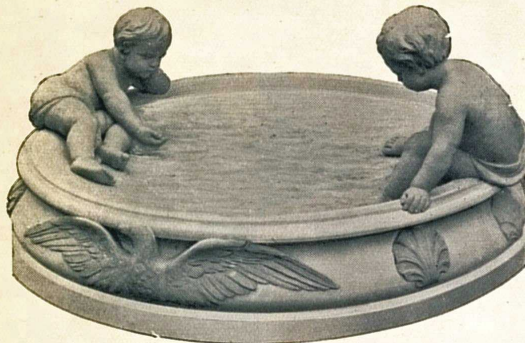
PULHAM & SON

71 NEWMAN ST LONDON W

SECTION IX

BIRD BATHS

PAGE 69



No. 531

No. 531
WOODHALL BIRD BATH
Diameter 2ft. 3ins.

Prices Bath	£3 0 0
„ Upright Figure (movable)	1 10 0
„ Reclining Figure (movable)	1 10 0
Complete	£6 0 0

The Pigeons can be used with this Bath.

No. 532
NEWMAN BIRD BATH
Diameter 2ft.

Prices Shell	£3 3 0
„ Figure (movable)	1 15 0
Complete	£4 18 0



No. 532



No. 533

No. 533
SHIPTON BIRD BATH
Diameter 2ft. 3ins.

Prices Bath	£2 10 0
„ Pigeon looking up (movable)	1 0 0
„ Pigeon looking down (movable)	1 0 0
Complete	£4 10 0

The No. 531 Figures can be used with this Bath.

No. 534
BROXBOURNE BIRD BATH
Diameter 2ft.

Prices Bath	£2 0 0
„ Frog (movable)	0 6 6
Complete	£2 6 6

The Frog can be placed in other Baths.



No. 534

PAGE 70

BIRD BATHS

SECTION IX

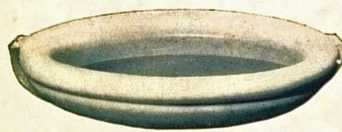


No. 537
VENTNOR BIRD BATH
Height 3ft.
Diameter extreme 2ft.
Price £10 10 0



No. 536
CORNWALL BIRD BATH
Height 3ft.
Diameter 2ft. 1in.
Price Bath £5 15 0
„ Figure 1 10 0
Complete £7 5 0

Figures or Pigeons as shown with
Nos. 531 and 533 can be used.



No. 538
ELSENHAM BIRD BATH
Diameter 1ft. 9½ins.
Price £1 12 6



No. 539
SHERWOOD BIRD BATH
Height 2ft. 3ins.
Diameter 2ft.
Price £4 10 0
Can be made as a feeding table.

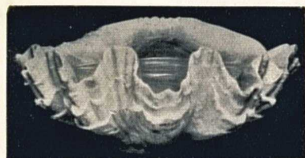
PULHAM & SON

71, NEWMAN ST. LONDON W.

SECTION IX

BIRD BATHS

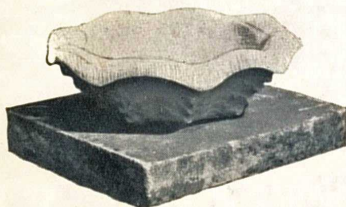
PAGE 71



No. 540
SHELL BIRD BATH
Diameter 1ft. 1in.
Price 19/6



No. 541
MAIDSTONE BIRD BATH
Height 2ft. 10ins.
Diameter 2ft.
Price Bath £6 0 0
Price Figure 1 15 0
Complete £7 15 0



No. 542
RIDGEWAY BIRD BATH
Height 5½ins.
Diameter 1ft. 6ins.
Price £1 10 0
Stone pad not included



No. 543
BROADSTAIRS BIRD BATH
Height 1ft. 7ins.
Diameter 1ft. 6ins.
Price £2 15 0

PAGE 72

BIRD BATHS

SECTION IX



No. 545

No. 545
STORTFORD BIRD BATH

Height 2ft. 1in.
 Diameter 1ft. 6ins.
 Owl height 6ins.
 Price Bath £2 17 6
 „ Owl 0 10 0
 Complete £3 7 6

A Frog can be substituted for Owl



No. 630

No. 630
 TOADSTOOL SEAT
 in "Pulhamite" cement
 Height 2ft.
 Diameter 1ft. 8ins.
 Price £1 12 6
 Height 1ft. 6ins.
 Diameter 1ft. 4ins.
 Price £1 7 6

No. 631
 "PULHAMITE" BALL VALVE
 Valve for a 4in. drain
 Price £2 0 0
 Valve for a 6in. drain
 Price £2 15 0
 Other sizes made.



No. 631

This Ball Valve has been made by us for over half a century and there is nothing on the market as efficient. It is especially suitable for use in connection with the emptying of Lakes and Ponds. The ball of the valve is provided with a ring for a chain to be attached to. Care should be taken after emptying the water to see that the leather of the valve is cleared of dirt and grit before replacing the ball.


SECTION X
JAPANESE LANTERNS
PAGE 73



No. 551
NIPPON
Height 7ft. 3ins.
Price £25 0 0



No. 552
HONJO
Height 4ft. 6ins.
Price £7 0 0



No. 553
TOKIO
Height 4ft.
Price £10 0 0



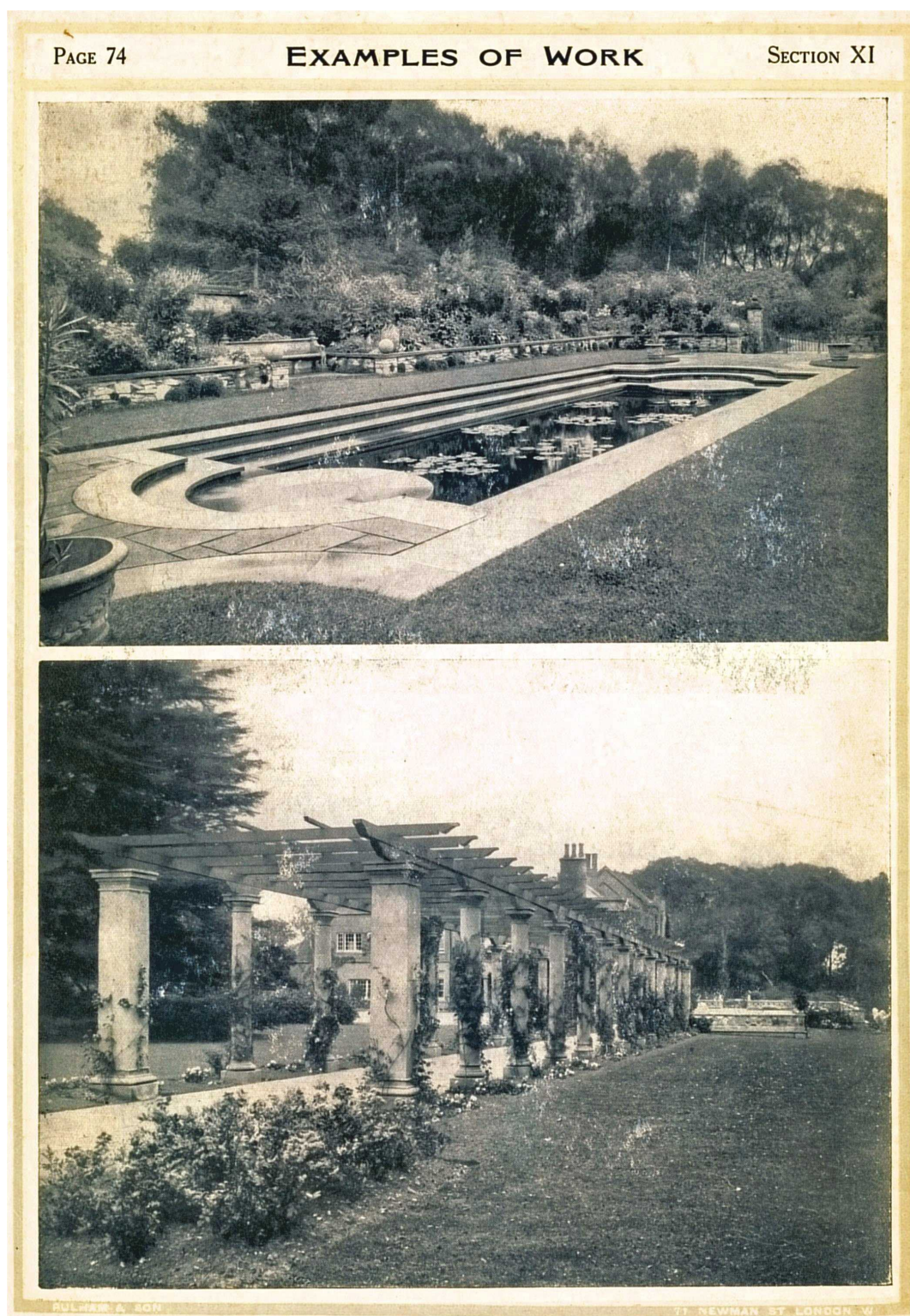
No. 554
YOSHI
Height 4ft.
Price £14 0 0



No. 556
PAGODA
Height 13ft. 3ins.
Price £59 15 0
Height 10ft. 6ins.
Price £46 0 0



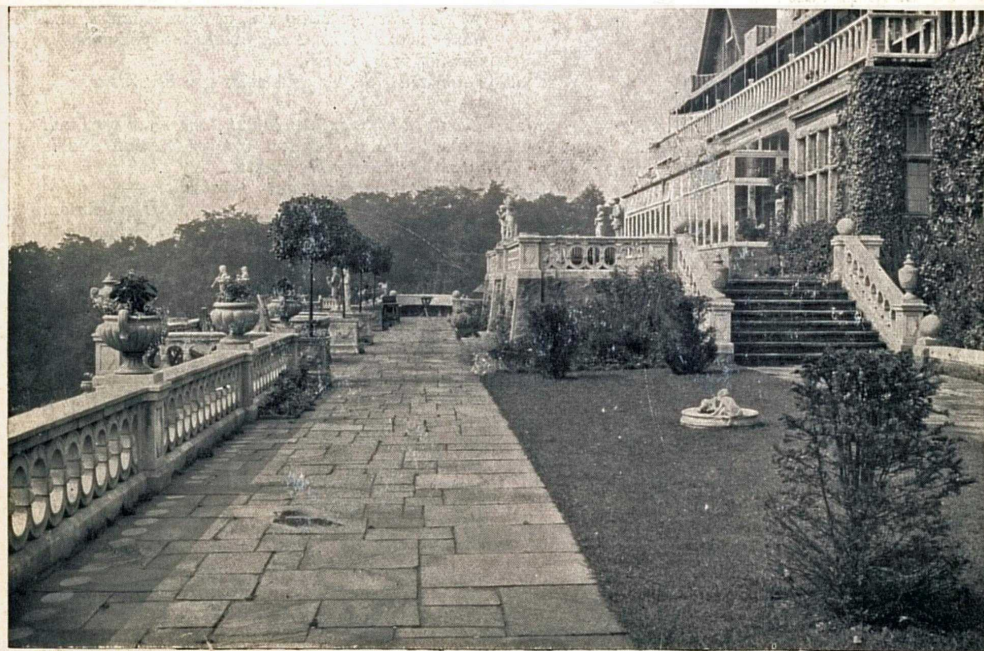
No. 557
OKAYAMA
Height 4ft.
Price £13 10 0



SECTION XI

EXAMPLES OF WORK

PAGE 75



PULHAM & SON

71, NEWMAN ST. LONDON W.

Testimony in order of date, selected from many hundreds of letters received.

S. C. Hall, Esq.,
Art Journal, 49, Pall Mall, W.

M. C. Cunninghame, Esq.,
Corchouses, Lanark, N.B.
Lady Buxton,
Cromer

The Rt. Hon. Earl de Grey,
Studley Royal, Yorks.

Earl Carysfort,
Glenart, Arklow, Ireland.
Sir James Nasmyth
(Of steamhammer fame)
Penshurst, Kent.

E. W. Whinfield, Esq.,
Severn Grange, Worcester.

The Rt. Hon. Lord Brassey,
Normanhurst Court, Battle, Sussex.
T. H. Bryant, Esq.,
Juniper Hill, Nr. Dorking, Surrey.
Cole A. Adams, Esq. (Architect),
2 Princes Mansions, Victoria Street, S.W.
Sir L. Alma Tadema,
St. John's Wood, N.W.

The Rt. Hon. Earl Beauchamp,
Madresfield Court, Malvern, Worcs.
W. Gilbee Scott, Esq., F.R.I.B.A.,
25, Bedford Row, London, W.C.

His Grace the Duke of Portland,
Welbeck Abbey, Nr. Worksop, Notts.
F. A. Bevan, Esq.,
"Trent Park," New Barnet, Herts.

Lady Carew,
Clonroche, Co. Wexford, Ireland.
A. Norman Dugdale, Esq.,
Dutton Manor, Longridge, Preston.
Lady Sherborne,
Sherborne House, Northbeach, Glos.
Mrs. A. C. Thompson,
Chetnole, Oatlands Av., Weybridge.
Miss Steriott,
The Gables, The Parade, Monmouth.

F. K. Snell, Esq.,
Leigh Wood, Combe Martin, Devon.

Mrs. Glover,
626, Mansfield Road, Nottingham.

1851. I do not think there is one example in the whole exhibition—British or Foreign—so perfect as yours. The material is exquisite, the design admirable, and altogether it is a most beautiful work.

1858. The vases are exceedingly handsome and were admirably well executed.

1867. Lady Buxton is pleased with the seat and with the pretty flower stand.

1871. The vases you supplied to Earl de Grey and Ripon some years ago have stood the weather very well indeed, and have been very satisfactory.—John Clark.

1876. I am very pleased with the vases.

1880. The jardiniere you supplied me with has been greatly admired. It has stood the severe frosts without the slightest damage and is always a source of pleasure to me to see a work that is admirable in design, and in its careful execution.

1881. The balustrade gives great satisfaction to my friends. An artist who was here a little time ago was delighted with the effect.

1886. I am pleased with what you have done.

1887. I shall advertise "Pulhamite" day and night.

1888. I am very pleased with your work altogether.

1888. Please find enclosed cheque for the amount due for work executed, gateway, etc., at above address, and allow me to say that I am greatly satisfied with the result of your labours.

1890. I am well satisfied with what you have done.

1891. The work looks extremely well, and I am very well pleased with it. It does you great credit and is much admired by my friends.

1892. The vases have given every satisfaction.—
John Horton.

1894. Mr. F. A. Bevan will thank Messrs. Pulham and Son to send receipt for cheque enclosed for vases, which are very satisfactory.

1915. Lady Carew was well satisfied with the work done.

1920. The Fountain recently supplied is quite satisfactory.

1922. I am very pleased indeed with the Vases, and shall be pleased if you will make me two more like them.

1925. The Vase and Pedestal are in place, and look very well, and give great satisfaction.

1925. The Garden Vase is to hand, and we find it most suitable, and should like you to send us three more to match this one.

1925. I find the Fountain works well, and is in every way satisfactory, and further is a great addition to the garden from a pictorial point of view.

1925. We still get great pleasure from the Bird Bath you supplied to us, the birds revel in it.

